

SYMBOL LEGEND		LEGEND	
[Symbol]	AR CONDITIONING UNIT	[Symbol]	ARC
[Symbol]	BACKFLOW PREVENTOR	[Symbol]	AS - ACCESS EASEMENT
[Symbol]	BLUE PAINT MARK(WATER)	[Symbol]	AS - ASHP/ASHP
[Symbol]	BSSO&T/COVM BOX	[Symbol]	AS - ASHP/ASHP
[Symbol]	BSSO&T/COVM MANHOLE	[Symbol]	AS - ASHP/ASHP
[Symbol]	CONCRETE MONUMENT FOUND	[Symbol]	AS - ASHP/ASHP
[Symbol]	CLEANOUT	[Symbol]	AS - ASHP/ASHP
[Symbol]	CABLE TV BOX	[Symbol]	AS - ASHP/ASHP
[Symbol]	FIBER OPTIC CABLE MARKER	[Symbol]	AS - ASHP/ASHP
[Symbol]	FIRE DEPT CONNECTION	[Symbol]	AS - ASHP/ASHP
[Symbol]	FIRE HYDRANT	[Symbol]	AS - ASHP/ASHP
[Symbol]	GAS LINE MARKER POST	[Symbol]	AS - ASHP/ASHP
[Symbol]	GAS MANHOLE	[Symbol]	AS - ASHP/ASHP
[Symbol]	GAS METER	[Symbol]	AS - ASHP/ASHP
[Symbol]	GAS VALVE	[Symbol]	AS - ASHP/ASHP
[Symbol]	GEORGIA POWER COMPANY MANHOLE	[Symbol]	AS - ASHP/ASHP
[Symbol]	GREASE TRAP	[Symbol]	AS - ASHP/ASHP
[Symbol]	IRIGATION CONTROL VALVE	[Symbol]	AS - ASHP/ASHP
[Symbol]	IRON PIN FOUND	[Symbol]	AS - ASHP/ASHP
[Symbol]	LAMP POST/LIGHT POLE	[Symbol]	AS - ASHP/ASHP
[Symbol]	MAIL BOX/KIOSK	[Symbol]	AS - ASHP/ASHP
[Symbol]	MONITORING WELL	[Symbol]	AS - ASHP/ASHP
[Symbol]	ORANGE PAINT MARK(POWER)	[Symbol]	AS - ASHP/ASHP
[Symbol]	POWER/ELEC BOX	[Symbol]	AS - ASHP/ASHP
[Symbol]	POWER MANHOLE	[Symbol]	AS - ASHP/ASHP
[Symbol]	POWER METER	[Symbol]	AS - ASHP/ASHP
[Symbol]	RED PAINT MARK(POWER)	[Symbol]	AS - ASHP/ASHP
[Symbol]	SEWER	[Symbol]	AS - ASHP/ASHP
[Symbol]	SEWER MANHOLE	[Symbol]	AS - ASHP/ASHP
[Symbol]	SEWER METER	[Symbol]	AS - ASHP/ASHP
[Symbol]	UTILITY BOX	[Symbol]	AS - ASHP/ASHP
[Symbol]	UTILITY MANHOLE	[Symbol]	AS - ASHP/ASHP
[Symbol]	UTILITY POLE	[Symbol]	AS - ASHP/ASHP
[Symbol]	VALVE MARKER POST	[Symbol]	AS - ASHP/ASHP
[Symbol]	WATER MANHOLE	[Symbol]	AS - ASHP/ASHP
[Symbol]	WATER METER	[Symbol]	AS - ASHP/ASHP
[Symbol]	WATER VALVE	[Symbol]	AS - ASHP/ASHP
[Symbol]	CROSS WALK SIGNAL POLE	[Symbol]	AS - ASHP/ASHP
[Symbol]	YELLOW PAINT MARK(GAS)	[Symbol]	AS - ASHP/ASHP
[Symbol]	FENCE LINE	[Symbol]	AS - ASHP/ASHP
[Symbol]	POWER & TELEPHONE	[Symbol]	AS - ASHP/ASHP
[Symbol]	GAS LINE	[Symbol]	AS - ASHP/ASHP
[Symbol]	TELEPHONE LINE	[Symbol]	AS - ASHP/ASHP
[Symbol]	USE TEL	[Symbol]	AS - ASHP/ASHP
[Symbol]	WATER LINE	[Symbol]	AS - ASHP/ASHP

**REFERENCE MATERIAL:**

- DEED EXECUTOR'S ASSENT TO DEVISE, BETWEEN STEPHEN CHARLES YANCEY AND JAMES A. YANCEY, DATED OCTOBER 5, 2016, DEED BOOK 15361, PAGE 3120 COBB COUNTY RECORDS.
- SURVIVORSHIP DEED: KYLE YANCEY TO JANET N. YANCEY AND KYLE YANCEY, DATED SEPTEMBER 20, 1994 DEED BOOK 6492, PAGE 409 COBB COUNTY RECORDS.
- RIGHT-OF-WAY DEED: JAMES A. YANCEY TO COBB COUNTY DEPARTMENT OF TRANSPORTATION, DATED JUNE 24, 1987 DEED BOOK 4544, PAGE 47 COBB COUNTY RECORDS. (7001 FACTORY SHOALS ROAD & SIX FLAGS RD.)
- PLAT: ALTAIACSM LAND TITLE SURVEY FOR SOUTH COBB REDEVELOPMENT AUTHORITY, LOCATED IN LAND LOTS 511 & 590, 18TH DISTRICT, 2ND SECTION, COBB COUNTY, GEORGIA, PREPARED BY FRONTLINE SURVEYING, DATED 09/04/2015.
- PLAT: SURVEY FOR KYLE YANCEY, LOCATED IN LAND LOT 491, 18TH DISTRICT, 2ND SECTION, COBB COUNTY, GEORGIA, PREPARED BY SANDERS ENGINEERING CO., DATED 05/24/1965.
- PLAT: PROPERTY OF JEROME FLOTT & RUTH ANN FLOTT, LOCATED IN LAND LOT 512, 18TH DISTRICT, 2ND SECTION, COBB COUNTY, GEORGIA, PREPARED BY GEORGIA LAND SURVEYING CO., INC., DATED 05/19/1991, (7061 FACTORY SHOALS ROAD)
- PLAT: ALTAIACSM LAND TITLE SURVEY OF 2200 SIX FLAGS PARKWAY, AUSTELL, GA, FOR WEST PARK APARTMENT COMPLEX, WEST PLACE APARTMENT COMPLEX, ET AL, LOCATED IN LAND LOT 510, 18TH DISTRICT, 2ND SECTION, COBB COUNTY, GEORGIA, PREPARED BY GEORGIA LAND SURVEYING CO., DATED 03/18/2014, LAST REVISED 3/25/2014, JOB #1935772.
- WARRANTY DEED: GEORGE A. MOLTZ, JR. INDIVIDUALLY AND AS EXECUTOR OF THE LAST WILL AND TESTAMENT OF ALBRECHT BAUMBACH TO JAMES ALVIN YANCEY, DATED FEBRUARY 25, 1945, DEED BOOK 175, PAGE 208 COBB COUNTY RECORDS.

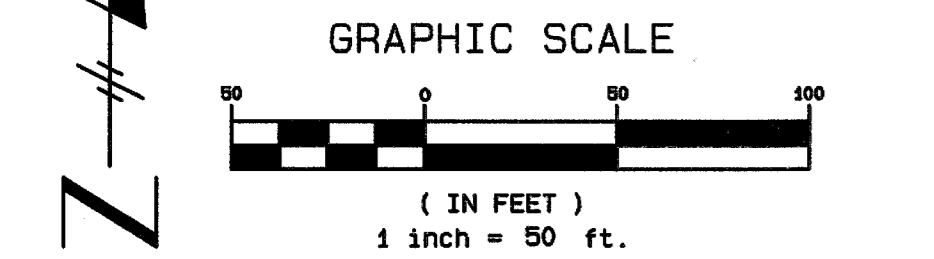
**WATTS & BROWNING ENGINEERS, INC.** HAS EXAMINED THE NATIONAL FLOOD INSURANCE PROGRAM (NFIP) FLOOD INSURANCE RATE MAP (FIRM) AND BY GRAPHICALLY PLOTTING THE LOCATION OF THE SUBJECT PROPERTY ONTO COBB COUNTY FIRM MAP NUMBER 13007C0212H & 214H, DATED MARCH 4, 2013 THE REFERENCED PROPERTY IS LOCATED IN THE ZONE LISTED BELOW.

ZONE X (UNSHADED): AREAS DETERMINED TO BE OUTSIDE THE 0.2% ANNUAL CHANCE FLOODPLAIN.

THE FLOOD LINE, IF SHOWN, IS APPROXIMATE AND THE ACTUAL LIMITS OF FLOOD LINE BASED ON PUBLISHED ELEVATIONS MAY EXTEND BEYOND THOSE SHOWN HEREON.

**SURVEYORS NOTES:**

- THE DISTANCES SHOWN HEREON ARE HORIZONTAL GROUND DISTANCES.
- THIS SURVEY IS PREPARED FOR THE EXCLUSIVE USE OF THE ENTITIES NAMED IN THE CERTIFICATION HEREON. SAID CERTIFICATION DOES NOT EXTEND TO ANY UNNAMED ENTITIES WITHOUT AN EXPRESSED RECERTIFICATION BY THE SURVEYOR NAMING SAID ENTITIES.
- ABOVE GROUND UTILITY LOCATIONS WERE OBTAINED FROM FIELD OBSERVATIONS. WATTS & BROWNING HAS NOT RESEARCHED UNDERGROUND UTILITY LOCATIONS. INFORMATION SHOWN HEREON REGARDING THE EXISTENCE, SIZE, TYPE AND LOCATION OF UNDERGROUND UTILITIES IS BASED ON MARKINGS IN THE FIELD AND INFORMATION FURNISHED BY OTHERS AND WATTS & BROWNING ENGINEERS IS UNABLE TO CERTIFY TO THE ACCURACY OR COMPLETENESS OF THIS INFORMATION. INDICATED LOCATIONS SHOULD BE CONFIRMED IN THE FIELD WITH UTILITY COMPANIES PRIOR TO PROCEEDING WITH PLANNING, DESIGN OR CONSTRUCTION.
- THIS SURVEY SHOWN HEREON WAS PREPARED WITHOUT THE BENEFIT OF ANY ABSTRACT OF TITLE. THEREFORE WATTS & BROWNING ENGINEERS, INC. MAKE NO GUARANTEES OR REPRESENTATIONS REGARDING INFORMATION SHOWN HEREON PERTAINING TO EASEMENTS, RIGHTS-OF-WAY, SETBACK LINES, AGREEMENTS, RESERVATIONS, AND OTHER SIMILAR MATTERS. THE EASEMENTS AND AGREEMENTS SHOWN HEREON WERE FOUND DURING NORMAL RESEARCH BY THIS FIRM.
- ANY DEPICTION OF GROUNDWATER FEATURES (RIVERS, STREAMS, CREEKS, SPRINGS, DITCHES, PONDS, LAKES), NATURAL OR OTHERWISE, SHOWN ON THIS SURVEY ARE MERELY OBSERVATIONS AT THE TIME OF THE SURVEY AND NOT A STATEMENT AS TO THE EXISTENCE OR NON-EXISTENCE OF ANY ENVIRONMENTAL CONDITION. WATTS & BROWNING ENGINEERS, INC. SURVEY PERSONNEL ARE NOT ENVIRONMENTAL PROFESSIONALS. WATTS & BROWNING ENGINEERS, INC. OFFERS NO CERTIFICATION AS TO EXISTENCE OR NON-EXISTENCE OF ANY GROUNDWATER FEATURE OR ENVIRONMENTALLY SENSITIVE AREAS ON OR NEAR THE SUBJECT PROPERTY AS MAY BE DETERMINED BY FEDERAL, STATE OR LOCAL GOVERNMENTAL REGULATIONS. PRIOR TO PLANNING OR CONSTRUCTION, AN ENVIRONMENTAL PROFESSIONAL SHOULD BE CONSULTED TO DETERMINE HOW THE SUBJECT PROPERTY MAY, OR MAY NOT, BE AFFECTED BY ENVIRONMENTAL ISSUES.
- BASIS OF BEARING SHOWN HEREON (GRID NORTH WEST ZONE) WAS DETERMINED FROM LEICA NA SMARTNET GPS CORE NETWORK REFERENCE STATION 0608 PER LEICA SMART NETWORK GPS TIE - NOVEMBER 11, 2016.



THE FIELD DATA UPON WHICH THIS MAP OR PLAT IS BASED HAS A CLOSURE OF ONE FOOT IN 87,078 FEET AND AN ANGULAR ERROR OF 0.1 PER ANGLE POINT, AND WAS LEAST SQUARES ADJUSTED.

THIS MAP OR PLAT HAS BEEN CALCULATED FOR CLOSURE AND IS FOUND TO BE ACCURATE WITHIN ONE FOOT IN 455,282 FEET.

A LEICA TS06+ TOTAL STATION WAS USED TO OBTAIN THE LINEAR AND ANGULAR MEASUREMENTS USED IN THE PREPARATION OF THIS PLAT.

THIS SURVEY WAS PREPARED IN CONFORMANCE WITH THE TECHNICAL STANDARDS FOR PROPERTY SURVEYS IN GEORGIA AS SET FORTH IN CHAPTER 1607 OF THE RULES OF THE GEORGIA BOARD OF REGISTRATION FOR PROFESSIONAL ENGINEERS AND LAND SURVEYORS AND AS SET FORTH IN THE GEORGIA PLAT ACT O.C.G.A. 15-5-67.

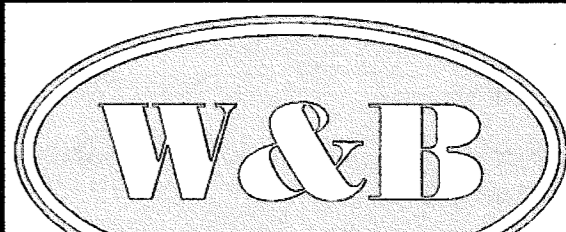
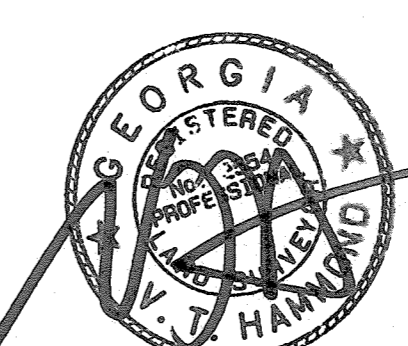
MEMBER SURVEYING AND MAPPING SOCIETY OF GEORGIA

SITE AREA  
37.88360 AC  
1,650,209 SF

SEE SHEET  
2 OF 2

# BOUNDARY SURVEY FOR STEPHEN YANCEY

LOCATED IN  
LAND LOTS 490, 491 & 511  
18TH DISTRICT, 2ND SECTION  
COBB COUNTY, GEORGIA



**WATTS & BROWNING ENGINEERS, INC.**  
CIVIL ENGINEERS & LAND SURVEYORS  
1180 BELLS FERRY ROAD  
MARIETTA, GEORGIA 30066-6030  
PHONE: 770-428-8196  
FAX: 770-428-8196  
WWW.WBENG.COM  
LSP000429 - PEF000714

NO.	DATE	BY	DESCRIPTION

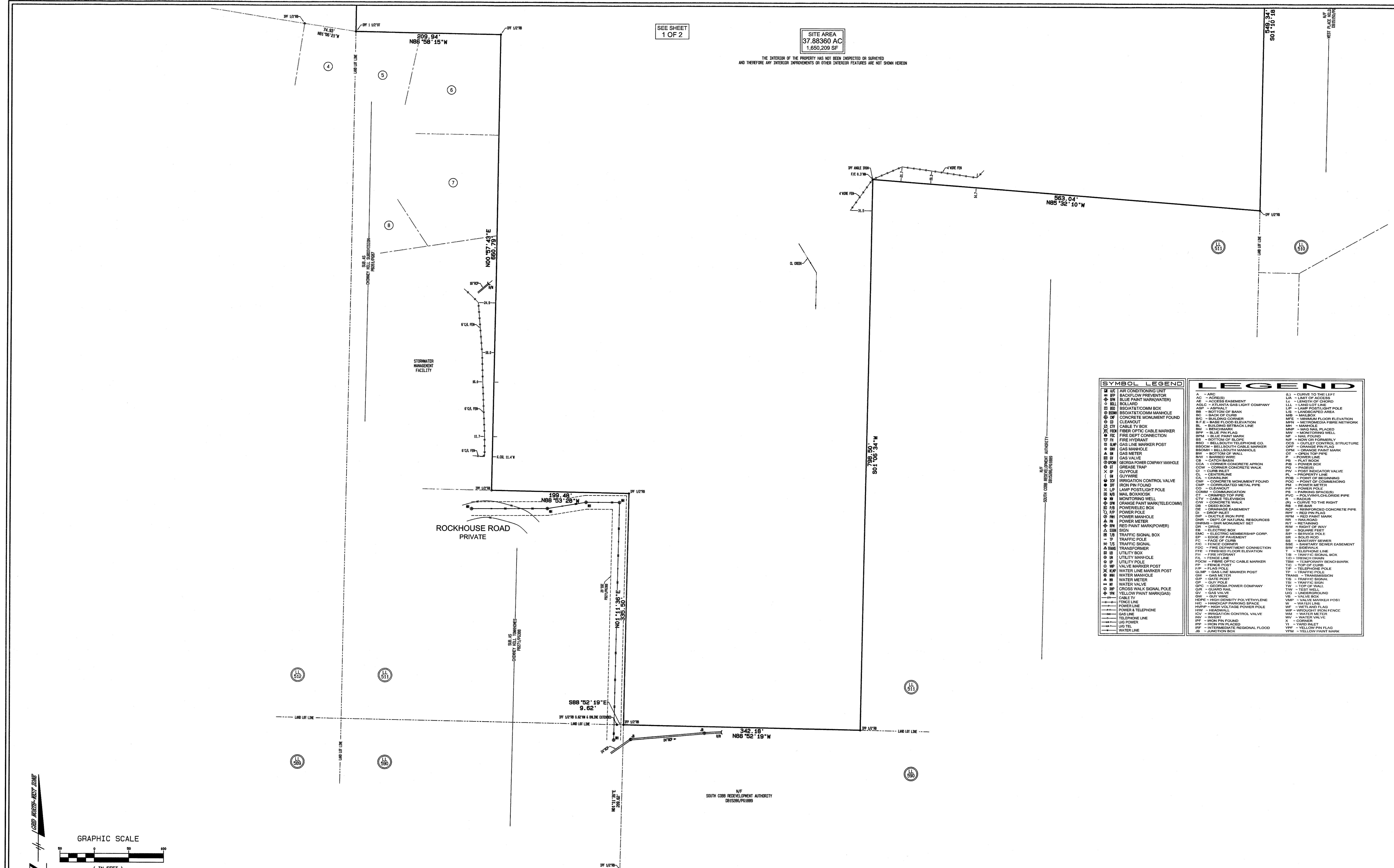
SCALE: 1" = 50'

DATE SURVEYED: 11/15/2016  
DATE UPDATED: N/A  
SURVEYED BY: AT  
DATE DRAFTED: 11/30/2016  
UPDATE DRAFTED: N/A  
DRAWN BY: ANCM  
CHECKED BY: YTH  
FIELD BOOK #: 2998  
JOB NUMBER: 181101  
FOLDER NUMBER: 181101  
CADD FILE: N/A  
DISC FILE: 181101  
COUNTY/LOT/2: COBB/490/18/2  
PLAT FILE: C  
SHEET: 1 OF 2

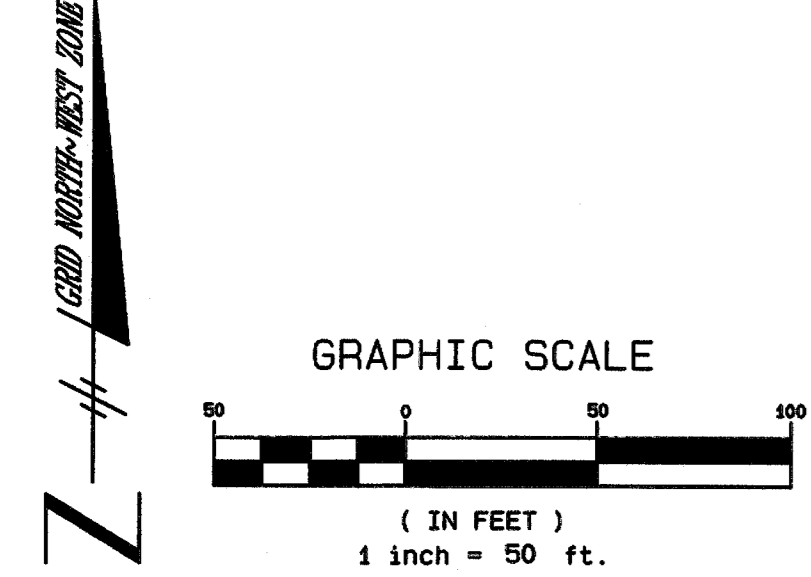
SEE SHEET  
1 OF 2

SITE AREA  
37.88360 AC  
1,650,209 SF

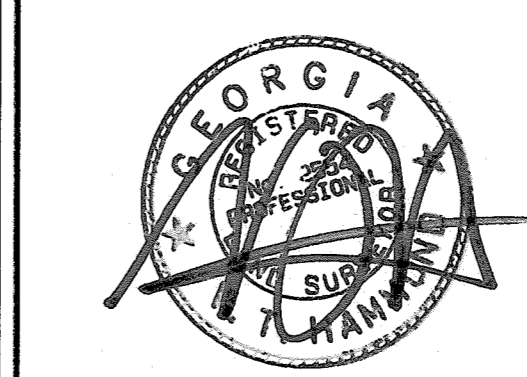
THE INTERIOR OF THE PROPERTY HAS NOT BEEN INSPECTED OR SURVEYED  
AND THEREFORE ANY INTERIOR IMPROVEMENTS OR OTHER INTERIOR FEATURES ARE NOT SHOWN HEREON



SYMBOL LEGEND		LEGEND	
[Symbol]	AC - AIR CONDITIONING UNIT	[Symbol]	AC - AREA
[Symbol]	AP - BACKFLOW PREVENTOR	[Symbol]	ACC - ACCESS
[Symbol]	BP - BLUE PAINT MARK (WATER)	[Symbol]	ACE - ACCESS EASEMENT
[Symbol]	B - BOLLARD	[Symbol]	AGL - ATLANTA GAS LIGHT COMPANY
[Symbol]	BSO - BSO/AT&T/COMM BOX	[Symbol]	ASL - LANDSCAPE LINE
[Symbol]	BSO - BSO/AT&T/COMM MANHOLE	[Symbol]	AS - ASPHALT
[Symbol]	BSO - BSO/AT&T/COMM MANHOLE	[Symbol]	BB - BOTTOM OF BANK
[Symbol]	BSO - BSO/AT&T/COMM MANHOLE	[Symbol]	BC - BACK OF CURB
[Symbol]	BSO - BSO/AT&T/COMM MANHOLE	[Symbol]	B/C - BUILDING CORNER
[Symbol]	BSO - BSO/AT&T/COMM MANHOLE	[Symbol]	B/E - BASE FLOOD ELEVATION
[Symbol]	BSO - BSO/AT&T/COMM MANHOLE	[Symbol]	BL - BUILDING SETBACK LINE
[Symbol]	BSO - BSO/AT&T/COMM MANHOLE	[Symbol]	BM - BENCH MARK
[Symbol]	BSO - BSO/AT&T/COMM MANHOLE	[Symbol]	B/M - BENCH MARK PLACED
[Symbol]	BSO - BSO/AT&T/COMM MANHOLE	[Symbol]	B/M - BENCH MARK PLACED
[Symbol]	BSO - BSO/AT&T/COMM MANHOLE	[Symbol]	B/M - BENCH MARK PLACED
[Symbol]	BSO - BSO/AT&T/COMM MANHOLE	[Symbol]	B/M - BENCH MARK PLACED
[Symbol]	BSO - BSO/AT&T/COMM MANHOLE	[Symbol]	B/M - BENCH MARK PLACED



BOUNDARY SURVEY FOR  
**STEPHEN YANCEY**  
 LOCATED IN  
 LAND LOTS 490, 491 & 511  
 18TH DISTRICT, 2ND SECTION  
 COBB COUNTY, GEORGIA



NO.	DATE	BY	DESCRIPTION

**W&B**  
**WATTS & BROWNING ENGINEERS, INC.**  
 CIVIL ENGINEERS & LAND SURVEYORS  
 1180 BELLS FERRY ROAD  
 MARIETTA, GEORGIA 30066-6030  
 PHONE: (770) 324-8182  
 FAX: (770) 324-8676  
 WWW.WBENG.COM  
 LSF000429 - PEF000714

SCALE:	1" = 50'
DATE SURVEYED:	11/15/2016
DATE UPDATED:	N/A
SURVEYED BY:	AT
DATE DRAFTED:	11/29/2016
UPDATE DRAFTED:	N/A
DRAWN BY:	YTH
CHECKED BY:	AMZ
FIELD BOOK #:	2588
JOB NUMBER:	181101
FOLDER NUMBER:	181101
CORD FILE:	N/A
DISC FILE:	181101
COUNTY/LL/D/S:	COBB/490/18/2
PLAT FILE:	C
SHEET:	2 OF 2