

# LAND FOR SALE – 12.3 +/- ACRES

## PAULDING COUNTY, GEORGIA



### COMMENTS

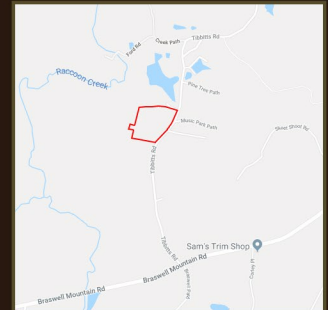
This opportunity consists of 12.3 +/- acres. The property has approximately 800' of road frontage on Tibbitts Road. The Subject Property is located in Land Lots 650 and 651 of the 3rd District, 3rd Section, Paulding County, Georgia.

### PROPERTY HIGHLIGHTS

Build your home (or homes!) on the ridge overlooking the small creek that flows through the property. Sheffield and Paulding Forest Wildlife Management Areas are located just down the street, and they offer many different outdoor recreational opportunities. This property is located in the North Paulding High School District.

Zoning: The Subject Property is zoned R-2

Asking Price: \$110,700



### PRESENTED BY:

Matt Allen

Email:

[mallen@allensouthernproperties.com](mailto:mallen@allensouthernproperties.com)

Phone: (678) 873-8125

Allen Southern Properties, Ltd.

[www.allensouthernproperties.com](http://www.allensouthernproperties.com)

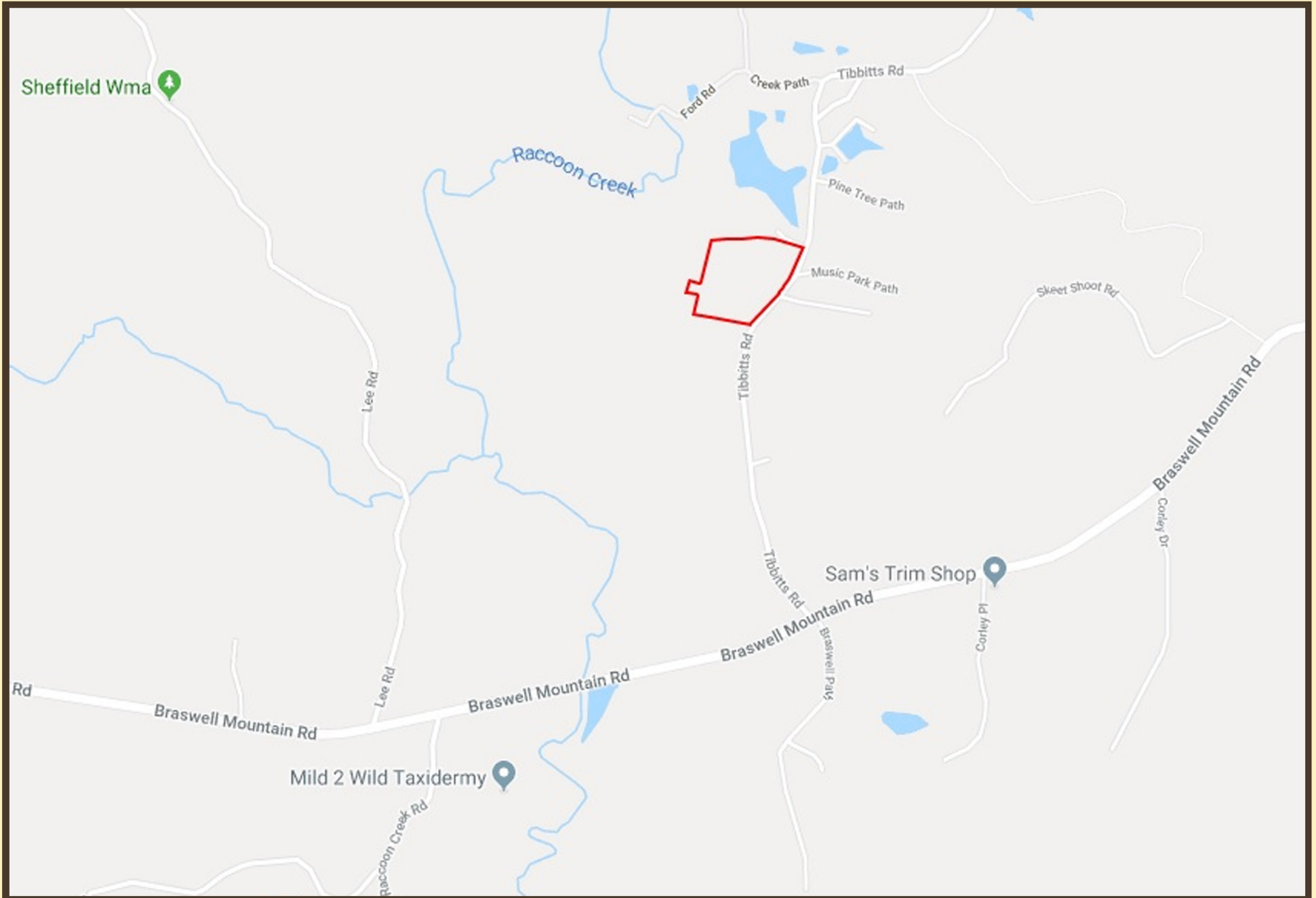


Information contained herein has been obtained from the owner of the property or from other sources we deem reliable. We have no reason to doubt its accuracy but cannot guarantee that it is correct.

# AERIAL



# LOCATION MAP



# TOPOGRAPHY

