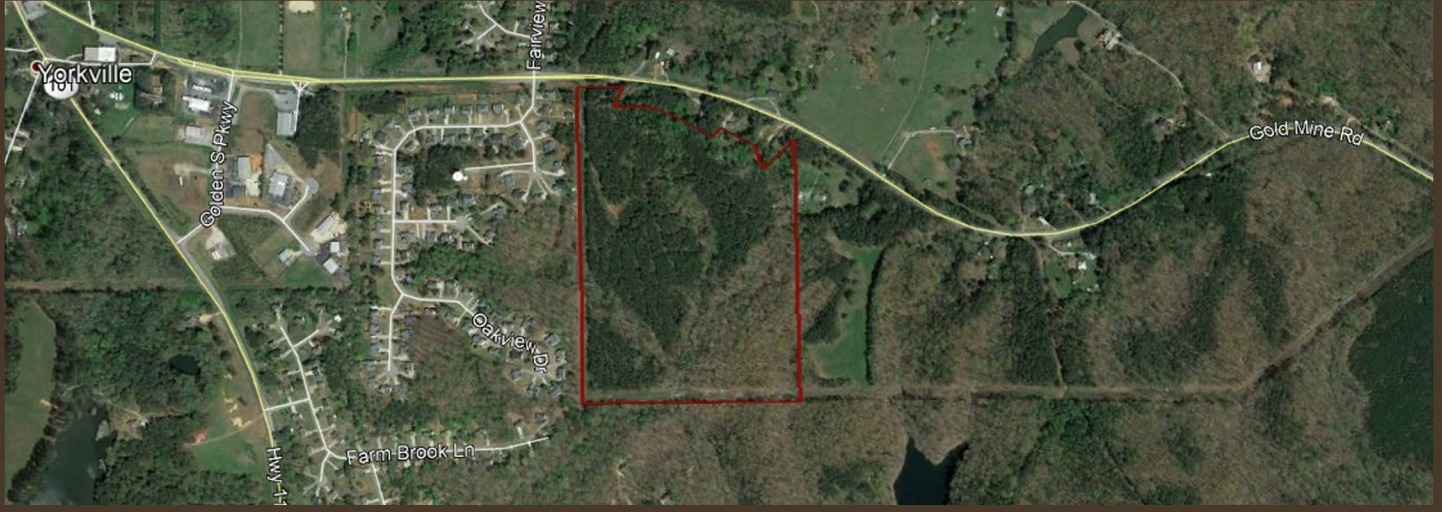


# LAND FOR SALE – 35 +/- ACRES

## PAULDING COUNTY, GEORGIA



### COMMENTS

This opportunity consists of 35 +/- acres in Paulding County. The Subject Property is located in Land Lots 265 and 296 of the 19th District, 3rd Section Paulding County, Georgia.

### PROPERTY HIGHLIGHTS

This property has good potential as a residential subdivision, investment property, or beautiful place to build a home on approximately 35 acres. This property is part of a larger parcel. According to Paulding County GIS, the property has approximately 280' of frontage on Goldmine Road. Access to Highway 278 is excellent. The Paulding Forest Wildlife Management Area is located just down the street and offers many outdoor recreational opportunities.

Zoning: The Subject Property is zoned R-2

Asking Price: \$143,000



### PRESENTED BY:

Matt Allen

Email:

[mallen@allensouthernproperties.com](mailto:mallen@allensouthernproperties.com)

Phone: (678) 873-8125

Allen Southern Properties, Ltd.

[www.allensouthernproperties.com](http://www.allensouthernproperties.com)

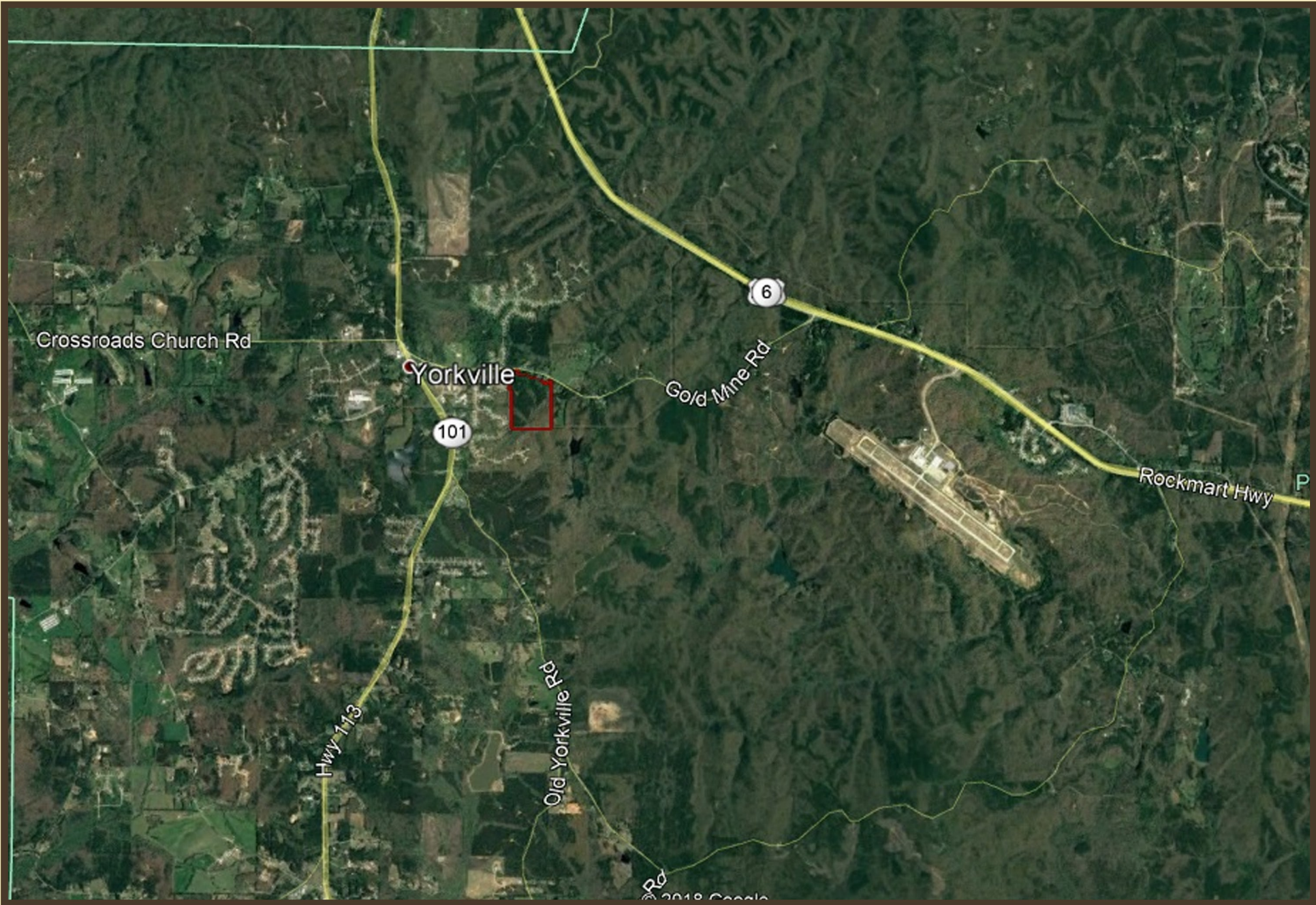


**Allen Southern**  
Properties, Ltd.

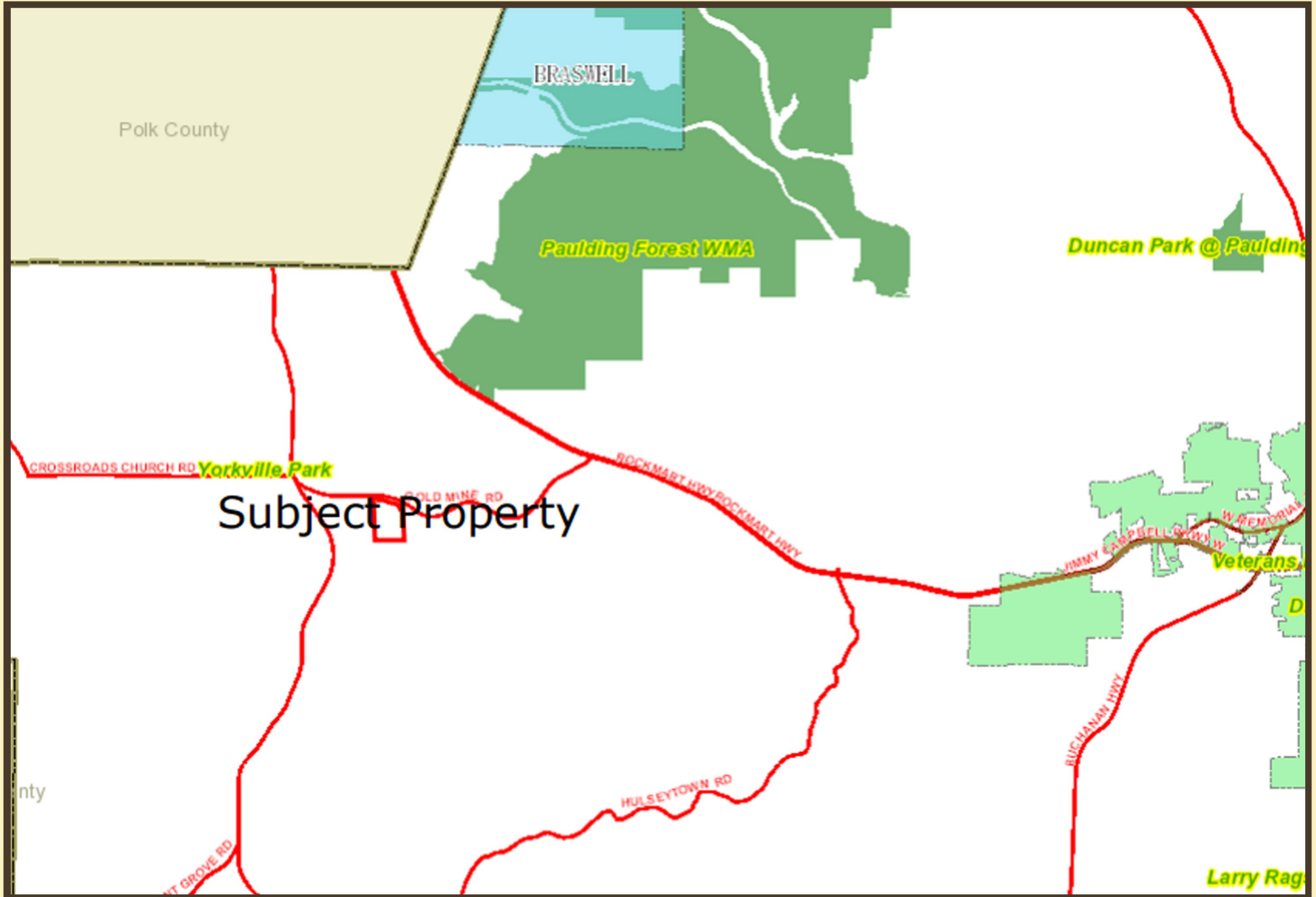
Information contained herein has been obtained from the owner of the property or from other sources we deem reliable. We have no reason to doubt its accuracy but cannot guarantee that it is correct.



# AERIAL

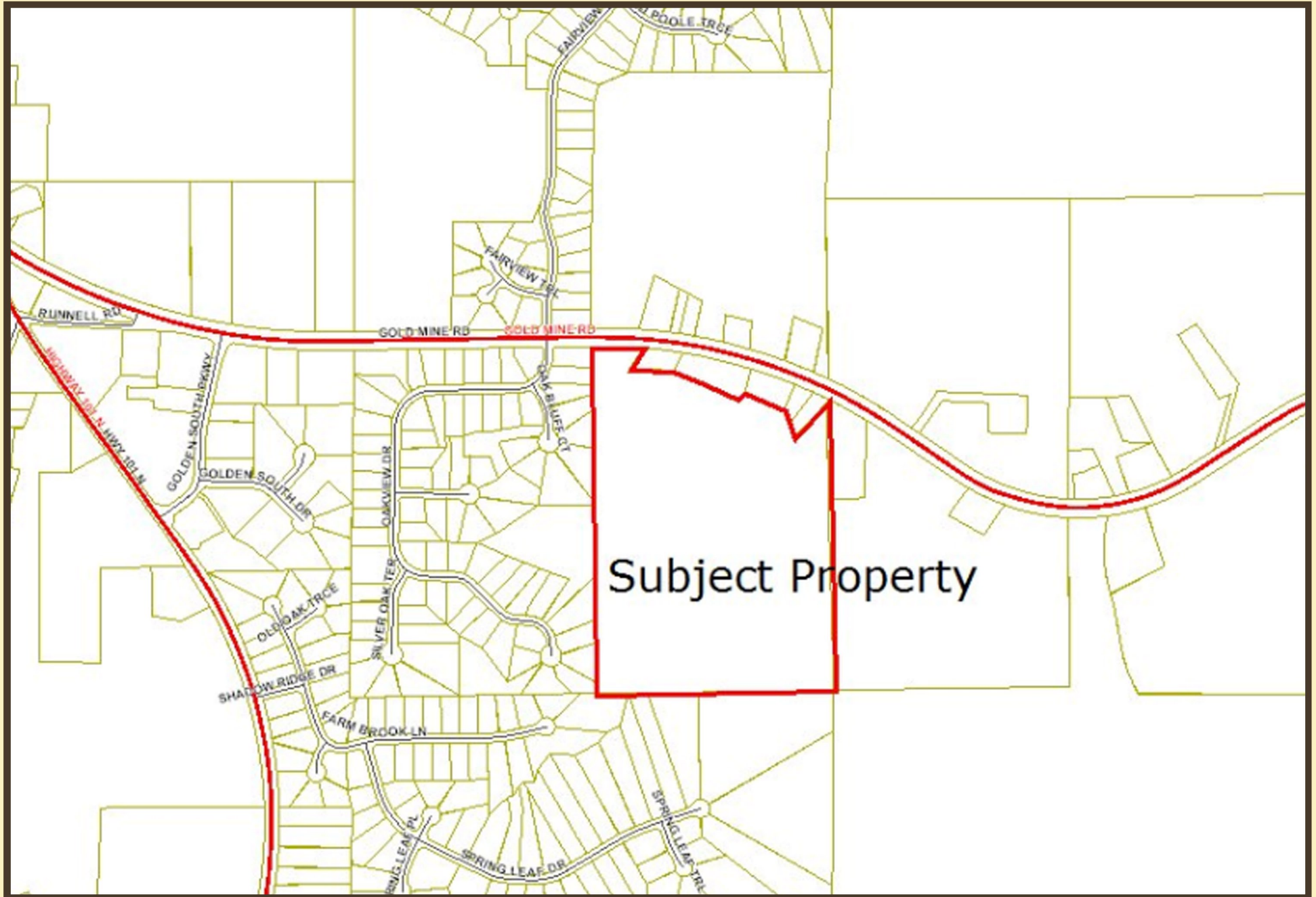


# LOCATION MAP 1





# LOCATION MAP 2





# TOPOGRAPHY

