

NOTES

1) LAND LOTS IN THIS DEVELOPMENT ARE TO BE
2) ADVANCE REVIEW WITH GEORGIA D.O.T.
IN PROGRESS.
3) ROAD LOTS 49, 50, 58, 59, 60 & 65
4) LAND LOTS 49, 50, 58, 59, 60 & 65
5) LAND LOTS 49, 50, 58, 59, 60 & 65
MARCH 15, 2007

Preliminary Design Certificate

I, the undersigned, being duly qualified by
education and experience, do hereby certify that
the design of the proposed streets and drainage
system shown on this plan is in accordance
with the standards and specifications of the
County of Gilmer, Georgia, and that I am
not aware of any other person or firm who
has been or will be practicing as a Professional Engineer
in the State of Georgia.

Signature _____ Date _____

Land Surveyor License Number: _____

Tentative Approval for Private Sanitary Sewerage System

The undersigned, being duly qualified by
education and experience, do hereby certify that
the design of the proposed sanitary sewerage
system shown on this plan is in accordance
with the standards and specifications of the
County of Gilmer, Georgia, and that I am
not aware of any other person or firm who
has been or will be practicing as a Professional Engineer
in the State of Georgia.

Signature _____ Date _____

Street Names Approval

The undersigned, being duly qualified by
education and experience, do hereby certify that
the proposed street names shown on this plan
are in accordance with the standards and
specifications of the County of Gilmer, Georgia,
and that I am not aware of any other person
or firm who has been or will be practicing as a
Professional Engineer in the State of Georgia.

Signature _____ Date _____

Soil Erosion and Sedimentation Control Plan

The undersigned, being duly qualified by
education and experience, do hereby certify that
the design of the proposed soil erosion and
sedimentation control plan shown on this plan
is in accordance with the standards and
specifications of the County of Gilmer, Georgia,
and that I am not aware of any other person
or firm who has been or will be practicing as a
Professional Engineer in the State of Georgia.

Signature _____ Date _____

Preliminary Plat Approval

The undersigned, being duly qualified by
education and experience, do hereby certify that
the design of the proposed preliminary plat
shown on this plan is in accordance with the
standards and specifications of the County of
Gilmer, Georgia, and that I am not aware of
any other person or firm who has been or will
be practicing as a Professional Engineer in the
State of Georgia.

Signature _____ Date _____

Developers Certificate

I, the undersigned, being duly qualified by
education and experience, do hereby certify that
the design of the proposed development shown
on this plan is in accordance with the
standards and specifications of the County of
Gilmer, Georgia, and that I am not aware of
any other person or firm who has been or will
be practicing as a Professional Engineer in the
State of Georgia.

Signature _____ Date _____

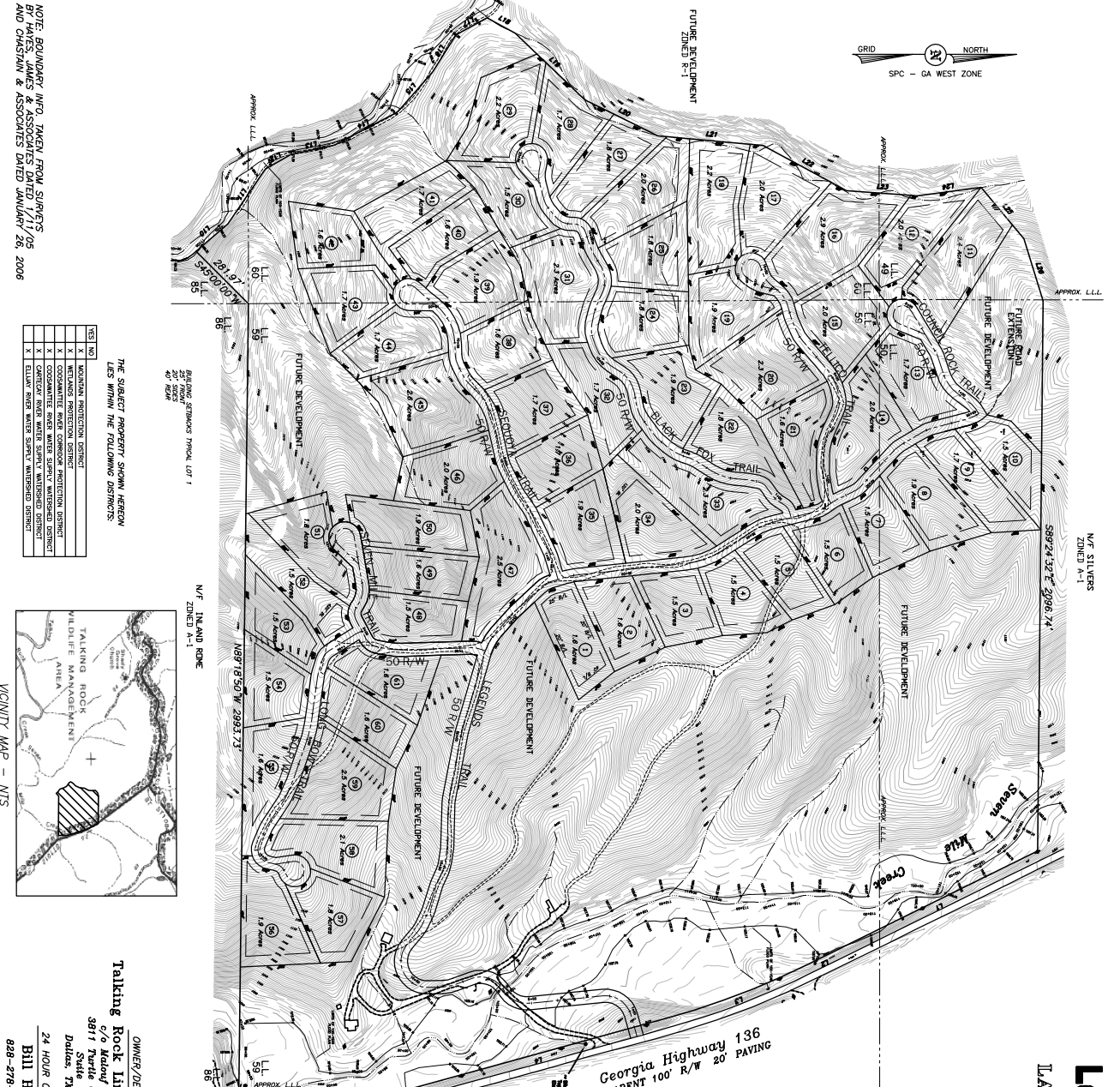
Stormwater Design Certificate

I, the undersigned, being duly qualified by
education and experience, do hereby certify that
the design of the proposed stormwater
management system shown on this plan is in
accordance with the standards and
specifications of the County of Gilmer, Georgia,
and that I am not aware of any other person
or firm who has been or will be practicing as a
Professional Engineer in the State of Georgia.

Signature _____ Date _____

Existing Topography

Surveyed by: _____
Checked by: _____
Date: _____
Scale: _____
Drawing: _____
Sheet: _____



PRELIMINARY PLAT FOR Legends of Talking Rock

LAND LOTS - 49, 50, 58, 59, 60 & 65
24th DISTRICT - 2nd SECTION
GILMER COUNTY, GEORGIA

TAX MAP PARCEL Nos. 3011-009 & 3027-001, 002
ZONING - R-1
TOTAL AREA = 124.3 ACRES
NUMBER OF LOTS = 4
LAND AREA = 4.6 ACRES
SEWERAGE = INDIVIDUAL SEPTIC SYSTEMS
WATER = INDIVIDUAL WELLS
LOT DESIGNATION = DWELLING-SINGLE FAMILY

OWNER/DEVELOPER
Talking Rock Limited Partners
c/o Murray Interests
3811 Turtle Creek Blvd.
Suite 1800
Dallas, TX 75219

24 HOUR CONTACT
Bill Holt
888-278-2061

LEGENDS

1) COVER SHEET & PRELIMINARY PLAT
2) CENTERLINE PROFILES
3) CENTERLINE PROFILES
4) CENTERLINE PROFILES
5) CENTERLINE PROFILES
6) CENTERLINE PROFILES
7) CENTERLINE REPORTS
8) SOILS
9) COVER SHEET SOIL EROSION, SEDIMENTATION & POLLUTION CONTROL PLAN
10) INITIAL SOIL EROSION, SEDIMENTATION & POLLUTION CONTROL PLAN
11) INITIAL SOIL EROSION, SEDIMENTATION & POLLUTION CONTROL PLAN
12) INITIAL SOIL EROSION, SEDIMENTATION & POLLUTION CONTROL PLAN
13) INITIAL SOIL EROSION, SEDIMENTATION & POLLUTION CONTROL PLAN
14) INTERMEDIATE SOIL EROSION, SEDIMENTATION & POLLUTION CONTROL PLAN
15) INTERMEDIATE SOIL EROSION, SEDIMENTATION & POLLUTION CONTROL PLAN
16) INTERMEDIATE SOIL EROSION, SEDIMENTATION & POLLUTION CONTROL PLAN
17) INTERMEDIATE SOIL EROSION, SEDIMENTATION & POLLUTION CONTROL PLAN
18) FINAL SOIL EROSION, SEDIMENTATION & POLLUTION CONTROL PLAN
19) FINAL SOIL EROSION, SEDIMENTATION & POLLUTION CONTROL PLAN
20) FINAL SOIL EROSION, SEDIMENTATION & POLLUTION CONTROL PLAN
21) FINAL SOIL EROSION, SEDIMENTATION & POLLUTION CONTROL PLAN
22) FINAL SOIL EROSION, SEDIMENTATION & POLLUTION CONTROL PLAN
23) FINAL SOIL EROSION, SEDIMENTATION & POLLUTION CONTROL PLAN
24) HYDROLOGY MAP

NOTE: BOUNDARY INFO. TAKEN FROM SURVEYS
BY HAYES, JAMES & ASSOCIATES DATED 1/11/05
AND CHASTAIN & ASSOCIATES DATED JANUARY 28, 2006

THE SUBJECT PROPERTY SHOWN HEREON
LIES WITHIN THE FOLLOWING DISTRICTS:

DIST. NO.	DIST. NAME
1	WILSON PROTECTION DISTRICT
2	WILSON PROTECTION DISTRICT
3	WILSON PROTECTION DISTRICT
4	WILSON PROTECTION DISTRICT
5	WILSON PROTECTION DISTRICT
6	WILSON PROTECTION DISTRICT
7	WILSON PROTECTION DISTRICT
8	WILSON PROTECTION DISTRICT
9	WILSON PROTECTION DISTRICT
10	WILSON PROTECTION DISTRICT
11	WILSON PROTECTION DISTRICT
12	WILSON PROTECTION DISTRICT
13	WILSON PROTECTION DISTRICT
14	WILSON PROTECTION DISTRICT
15	WILSON PROTECTION DISTRICT
16	WILSON PROTECTION DISTRICT
17	WILSON PROTECTION DISTRICT
18	WILSON PROTECTION DISTRICT
19	WILSON PROTECTION DISTRICT
20	WILSON PROTECTION DISTRICT
21	WILSON PROTECTION DISTRICT
22	WILSON PROTECTION DISTRICT
23	WILSON PROTECTION DISTRICT
24	WILSON PROTECTION DISTRICT

VICINITY MAP - NTS

CALL TABLE

Course	Bearing	Distance
1	S 89° 14' 00" E	50.70' ±
2	S 89° 14' 00" E	50.70' ±
3	S 89° 14' 00" E	50.70' ±
4	S 89° 14' 00" E	50.70' ±
5	S 89° 14' 00" E	50.70' ±
6	S 89° 14' 00" E	50.70' ±
7	S 89° 14' 00" E	50.70' ±
8	S 89° 14' 00" E	50.70' ±
9	S 89° 14' 00" E	50.70' ±
10	S 89° 14' 00" E	50.70' ±
11	S 89° 14' 00" E	50.70' ±
12	S 89° 14' 00" E	50.70' ±
13	S 89° 14' 00" E	50.70' ±
14	S 89° 14' 00" E	50.70' ±
15	S 89° 14' 00" E	50.70' ±
16	S 89° 14' 00" E	50.70' ±
17	S 89° 14' 00" E	50.70' ±
18	S 89° 14' 00" E	50.70' ±
19	S 89° 14' 00" E	50.70' ±
20	S 89° 14' 00" E	50.70' ±
21	S 89° 14' 00" E	50.70' ±
22	S 89° 14' 00" E	50.70' ±
23	S 89° 14' 00" E	50.70' ±
24	S 89° 14' 00" E	50.70' ±

GRAPHIC SCALE - FEET

1" = 200'

200 0 200 400 600

PLAT FILE: 2007024P SHEET 01 OF 24