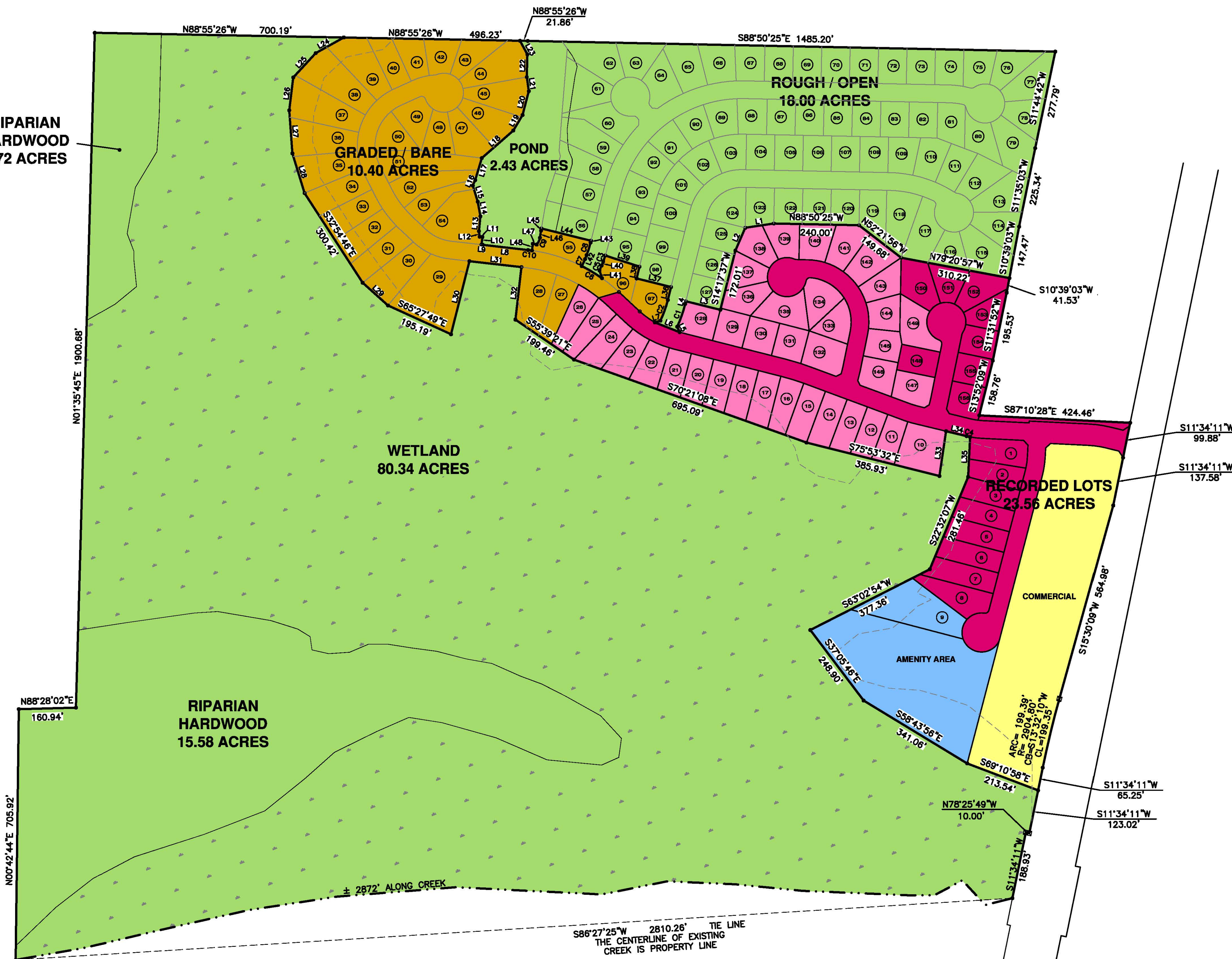


USE LINE TABLE CALLS IN CONSECUTIVE ORDER FOR PARCEL DESCRIPTION AROUND GRADED/BARE AND PLATTED LOT AREAS.

- RECORDED LOTS - 3.35 AC**
(RETAINED BY CAMDEN CREEK, LLC)
- CONSERVATION LAND - 119.07 AC**
(OWNED BY *STPL)
- GRADED / BARE LOTS - 10.40 AC**
(OWNED BY *STPL - NOT CONSERVED)
- RECORDED LOTS - 8.12 AC**
(OWNED BY *STPL - NOT CONSERVED)
- RECORDED LOTS & STREETS - 7.49 AC**
(OWNED BY UNRELATED PARTIES)
- COMMERCIAL PROPERTY - 4.609 AC**
(OWNED BY UNRELATED PARTIES)

*STPL - SOUTHEASTERN TRUST FOR PARKS AND LAND, INC.

**RIPARIAN
HARDWOOD
2.72 ACRES**



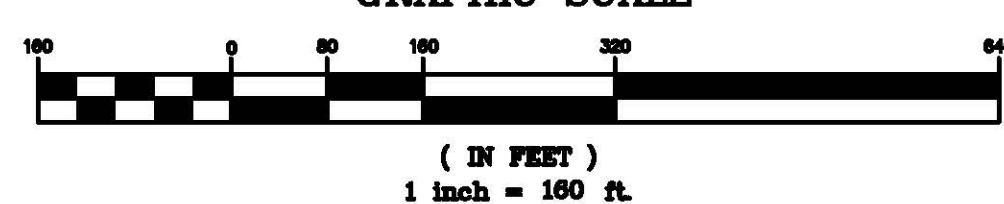
LINE TABLE

LINE	BEARING	LENGTH
L1	S81°28'22"W	81.16
L2	S23°23'26"W	69.96
L3	N76°06'33"W	99.92
L4	S13°53'27"W	7.93
L5	S28°16'29"E	17.05
L6	N88°28'42"W	75.23
L7	S72°51'53"W	16.13
L8	N83°27'51"W	128.05
L9	N83°27'51"W	3.86
L10	N06°32'09"E	21.99
L11	N85°20'30"W	7.61
L12	N07°57'49"W	15.88
L13	N05°45'20"E	42.08
L14	N10°19'34"W	41.43
L15	N17°02'13"W	47.82
L16	N23°57'13"E	16.59
L17	N16°41'45"E	64.98
L18	N48°48'35"E	117.42
L19	N32°57'16"E	51.00
L20	N14°41'50"E	69.51
L21	N08°13'39"W	40.16
L22	N01°31'09"E	63.86
L23	N28°30'10"W	43.53
L24	S80°51'38"W	90.34
L25	S42°39'04"W	93.25
L26	S06°59'35"W	93.17
L27	S04°10'27"E	121.53
L28	S17°06'11"E	117.29
L29	S48°04'48"E	95.78
L30	N14°08'30"E	212.22
L31	S83°27'51"E	147.49
L32	S08°32'08"W	148.79
L33	N08°24'04"E	127.58
L34	S78°24'23"E	58.35
L35	S02°48'21"W	112.76
L36	S13°53'27"W	37.62
L37	S78°06'33"E	100.00
L38	N13°53'27"E	34.28
L39	N71°54'37"W	101.21
L40	N21°00'33"E	12.08
L41	N17°48'55"W	22.92
L42	S21°00'53"W	12.08
L43	S13°53'27"W	5.00
L44	N76°06'33"W	143.86
L45	N09°42'38"E	8.09
L46	N09°08'31"E	20.42
L47	S78°28'19"E	11.30
L48	N06°32'09"E	19.16

CURVE TABLE

CURVE	LENGTH	RADIUS	CHORD	BEARING
C1	67.88	352.18	67.77	S19°21'48"W
C2	62.20	302.11	62.09	N19°50'23"E
C3	17.87	350.00	17.87	S19°33'08"W
C4	10.14	225.00	10.14	S77°41'51"E
C5	15.33	175.00	15.32	S23°31'29"W
C6	66.64	450.00	66.58	N59°01'41"W
C7	21.76	125.00	21.74	N28°00'10"E
C8	37.30	300.00	37.28	N17°27'10"E
C9	21.39	38.08	21.11	S25°14'08"W
C10	11.34	450.00	11.34	N82°44'32"W

GRAPHIC SCALE



ALL AREAS
CONSERVATION - 119.07 AC
GRADED / BARE - 10.40 AC
RECORDED LOTS - 23.56 AC
TOTAL AREA - 153.03 ACRES

CONSERVATION AREA ITEMIZED
ROUGH / OPEN - 18.00
RIPARIAN HARDWOOD - 18.30 AC
WETLAND - 80.34 AC
POND - 2.43 AC
TOTAL CONSERVATION LAND - 119.07

COMPILED PLAT DATA

BOUNDARY INFORMATION SHOWN WAS TAKEN FROM A SURVEY PREPARED FOR STERLING McNEEL BY ARCADIS AND DATED 12-23-2003.

WETLAND LIMITS, CONSTRUCTION LIMITS, AND OTHER AREAS SHOWN WERE TAKEN FROM AERIAL IMAGERY AND CONSTRUCTION PLANS PREPARED BY ARCADIS FOR CAMDEN LAKES S/D. THE LOCATION AND SIZE OF THESE AREAS ARE APPROXIMATE.

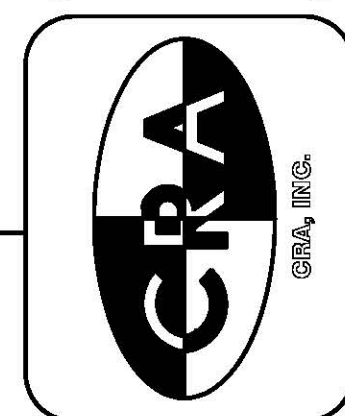
LOT LINES AND STREETS SHOWN WERE TAKEN FROM THE FINAL PLAT FOR CAMDEN LAKES S/D PREPARED BY CRA AND DATED 2-15-2007.

NOT FOR RECORDING

CARLTON RAKESTRAW & ASSOCIATES
 REGISTERED LAND SURVEYORS
 2203 MARIETTA HWY DALLAS, GEORGIA 30157
 PHONE: 770-443-2200 FAX: 770-443-2300

PROJECT NO. 06-005
 PLOT FILE # CONSERVATION
 DATE: 6-25-14
 DRAWN BY: WCR3
 APPROVED BY: W.C.R.

CAMDEN CREEK, LLC.
 SUBJECT PROPERTY IS LOCATED IN PAULDING, DOUGLAS, & CARROLL COUNTY, GEORGIA



REVISIONS 8-8-14 TO REVISE AREA OF PLATTED LOTS AND ADJUST CONSERVATION AREA PER MEETING WITH PAULDING COUNTY AND HIGHLAND COMMERCIAL BANK
 REVISIONS 8-22-14 TO CHANGE AREAS TO MATCH CORRECTED DEED

PROJECT **FORMERLY CAMDEN LAKES S/D**

SHT. NAME **COMPILED PLAT OF CONSERVATION AREA**

SHT. NO. **1 OF 1**