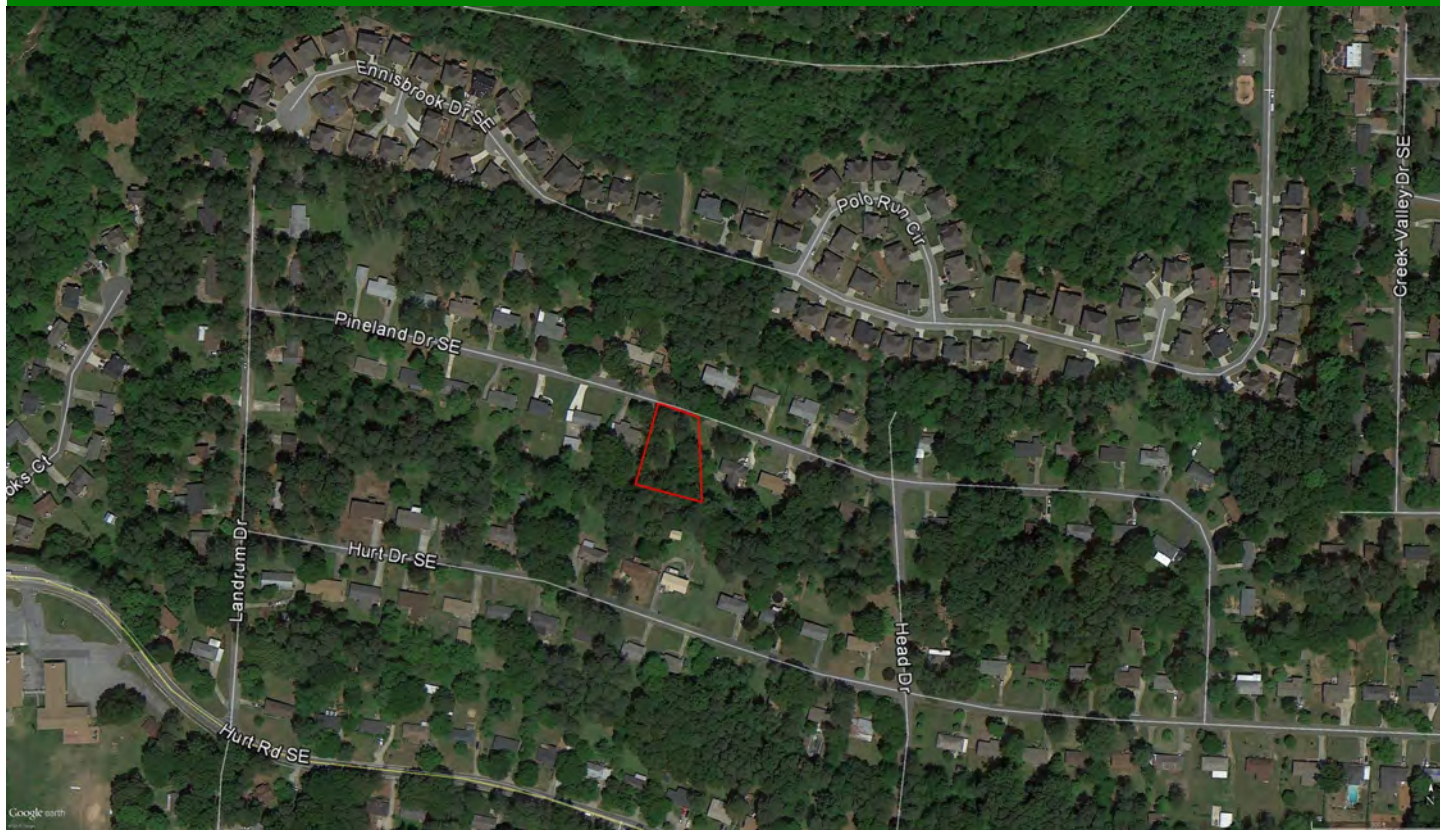


# FOR SALE-1 SINGLE FAMILY LOT HURT PARK SUBDIVISION



## COMMENTS:

This opportunity consists of a single family lot located in well-established Hurt Park subdivision in the Smyrna area of Cobb County, Georgia.

## PROPERTY HIGHLIGHTS:

Location: 134 PINELAND DRIVE, SMYRNA, GA 30080

Size: 20,000 +/-square feet. Lot dimensions are 90'x200'

Zoning: R-20 Cobb County

Price: \$39,900.00

PRESENTED BY:

MATT ALLEN

o cngpB cngpuqwj gtr tqr gt vku0eqo  
Phone: 678-873-8125

Cngp'Uqwj gt p'Rt qr gt vku'Nvf 0  
y y y 0cngpuqwj gtr tqr gt vku0eqo

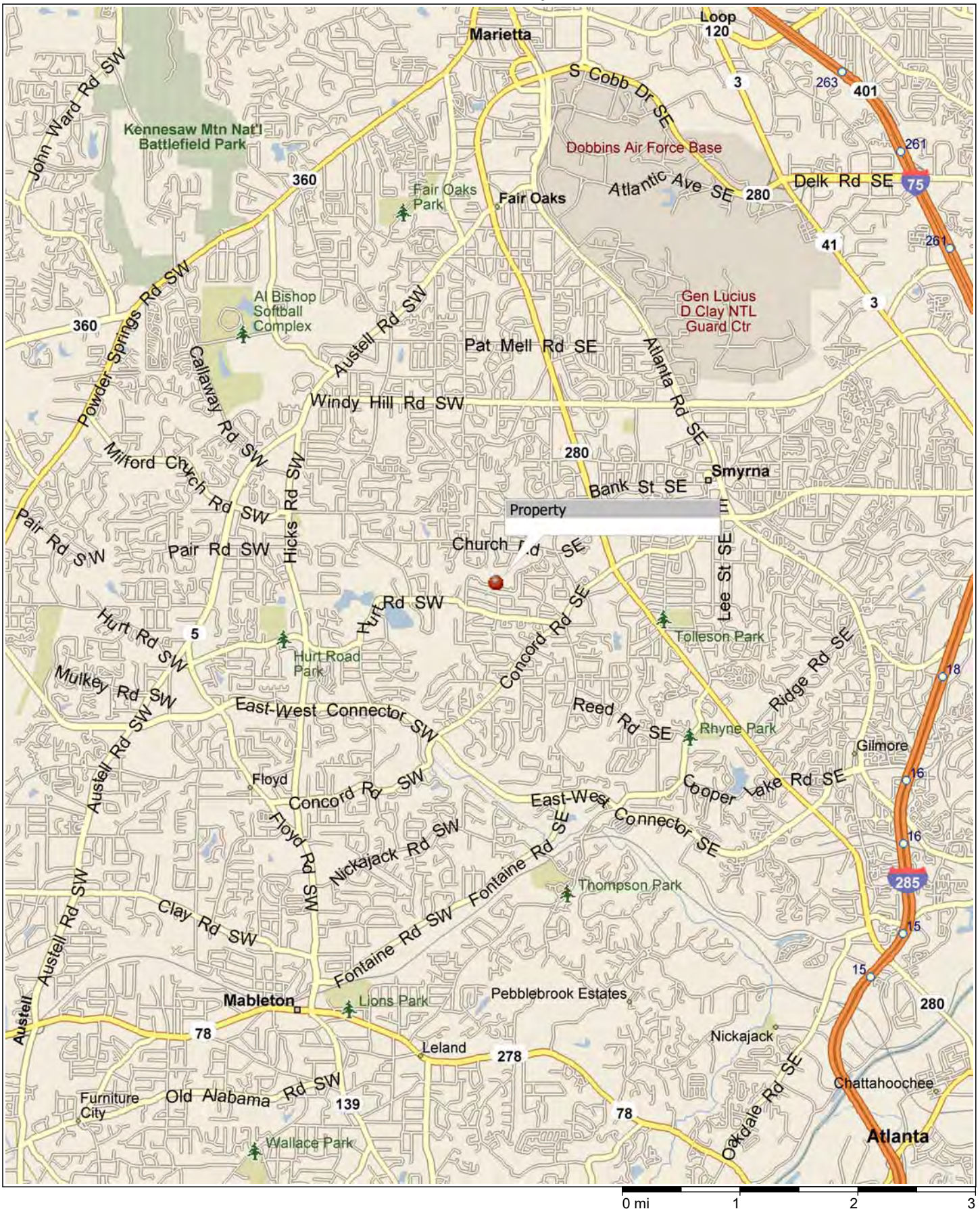


**Allen Southern**  
Properties, Ltd.

Information contained herein has been obtained from the owner of the property or from other sources we deem reliable. We have no reason to doubt its accuracy but cannot guarantee that it is correct.

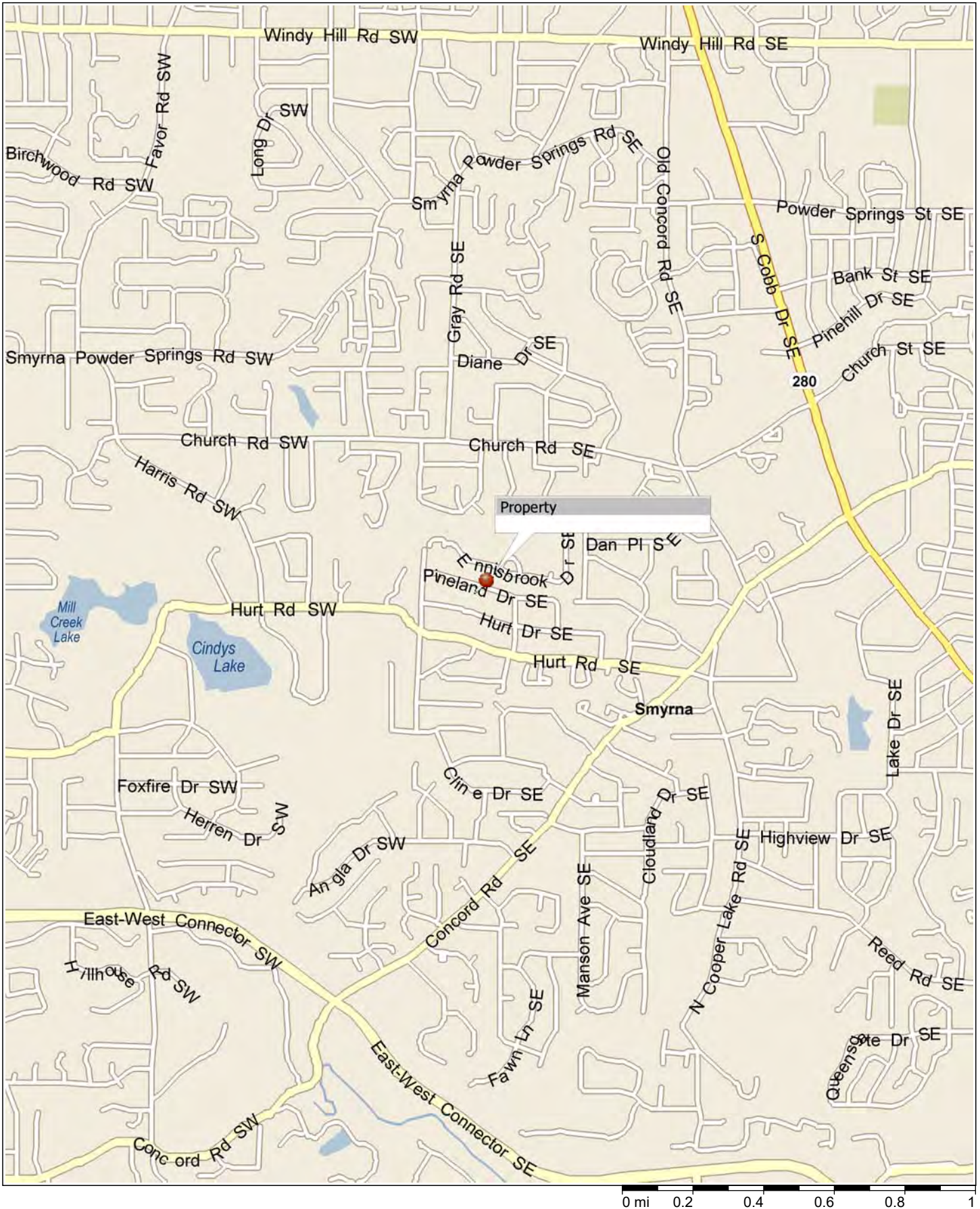


# Location Map 1



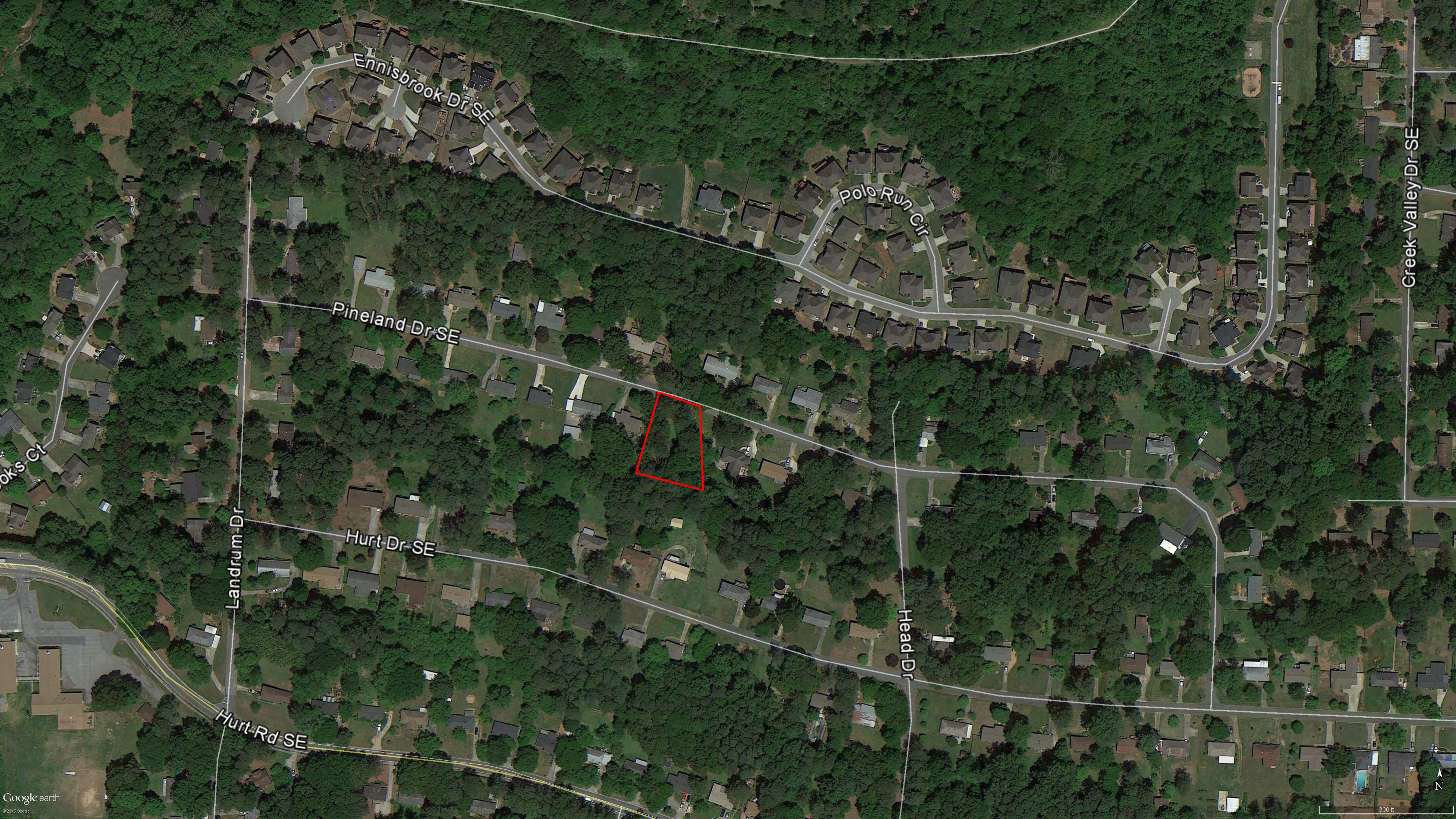


# Location Map 2



Copyright © and (P) 1988–2012 Microsoft Corporation and/or its suppliers. All rights reserved. <http://www.microsoft.com/streets/>  
Certain mapping and direction data © 2012 NAVTEQ. All rights reserved. The Data for areas of Canada includes information taken with permission from Canadian authorities, including: © Her Majesty the Queen in Right of Canada, © Queen's Printer for Ontario. NAVTEQ and NAVTEQ ON BOARD are trademarks of NAVTEQ. © 2012 Tele Atlas North America, Inc. All rights reserved. Tele Atlas and Tele Atlas North America are trademarks of Tele Atlas, Inc. © 2012 by Applied Geographic Solutions. All rights reserved. Portions © Copyright 2012 by Woodall Publications Corp. All rights reserved.





Ennisbrook Dr SE

Polo Run Cir

Pineland Dr SE

oks Ct

Landrum Dr

Hurt Dr SE

Head Dr

Greek Valley Dr SE

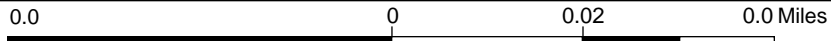
Hurt Rd SE







# Cobb County Georgia Online Mapping



WGS\_1984\_Web\_Mercator\_Auxiliary\_Sphere  
 © Cobb County Georgia

This map is a user generated static output from an Internet mapping site and is for reference only. Data layers that appear on this map may or may not be accurate, current, or otherwise reliable.

THIS MAP IS NOT TO BE USED FOR NAVIGATION

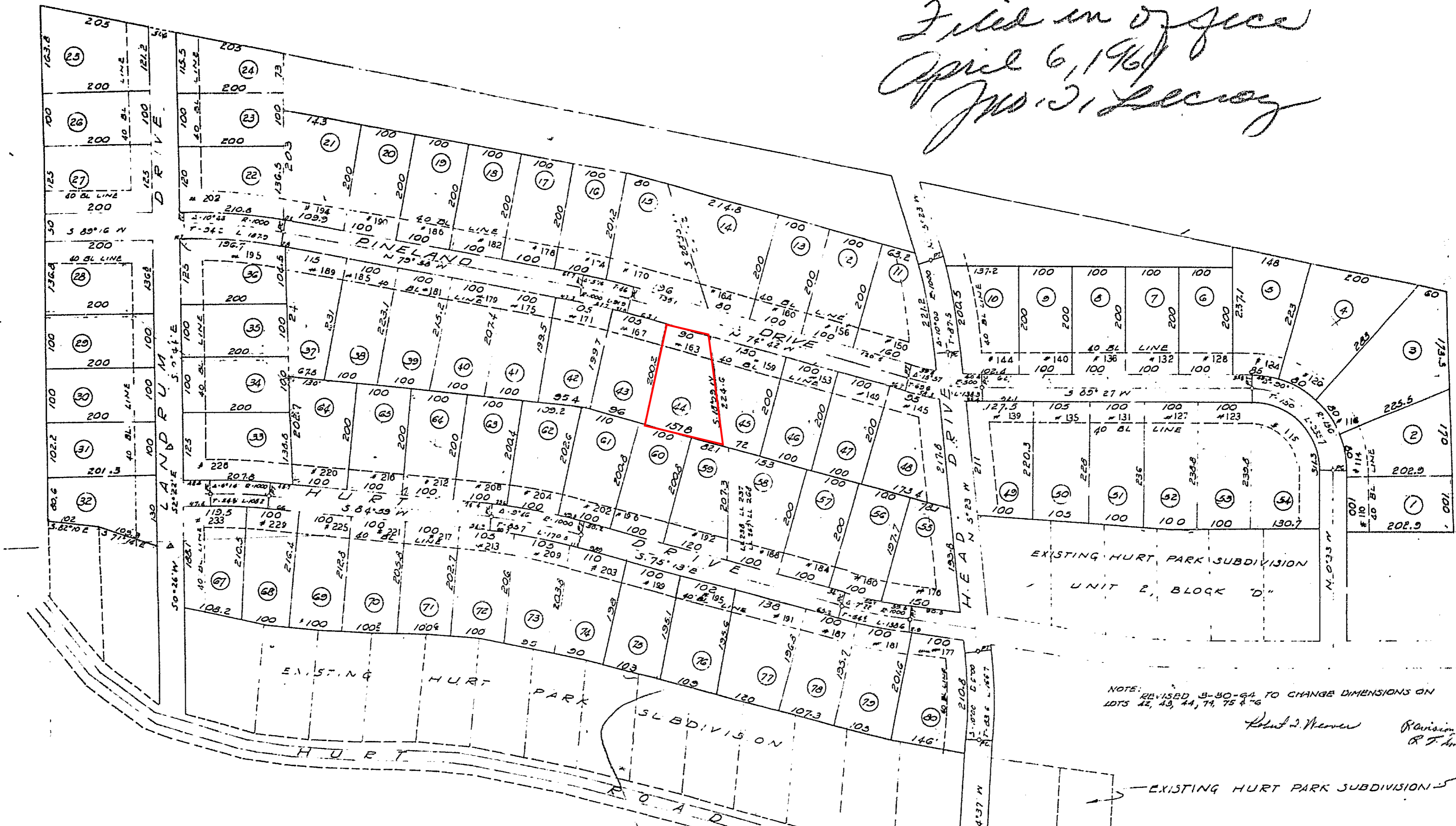
1:1,202



Map Notes:



*Filed in office  
April 6, 1961  
Jno. J. Secoy*



It is hereby certified that this plat is true and correct and was prepared from an actual survey made under my supervision in the field.  
*Robert J. Weaver*  
Reg. Co. Land Surveyor No. 865

The owner of the land shown on this plat and whose name is subscribed hereon hereby acknowledges that this plat was prepared from an actual survey and is dedicated to the use of the public for streets, alleys, parks, water courses, drains, easements and public places therein shown for the purposes and considerations herein expressed.

Signed *J. H. Adolfs* owner

REVISED PLAT  
HURT PARK SUBDIVISION  
UNIT 3

LOCATED IN LOTS 267, 268, 257 & 258 17<sup>TH</sup> DIST. 2<sup>ND</sup> SECT., COBB COUNTY GA.

SURVEYED JUNE 1960 BY  
ROBERT J. WEAVER SURVEYOR  
MARIETTA, GEORGIA  
SCALE: 1"=100'  
# HOUSE NOS.

REVISED MARCH 30, 1964 SEE NOTE

NOTE: REVISED 3-30-64 TO CHANGE DIMENSIONS ON LOTS 46, 49, 44, 74, 75 & 46

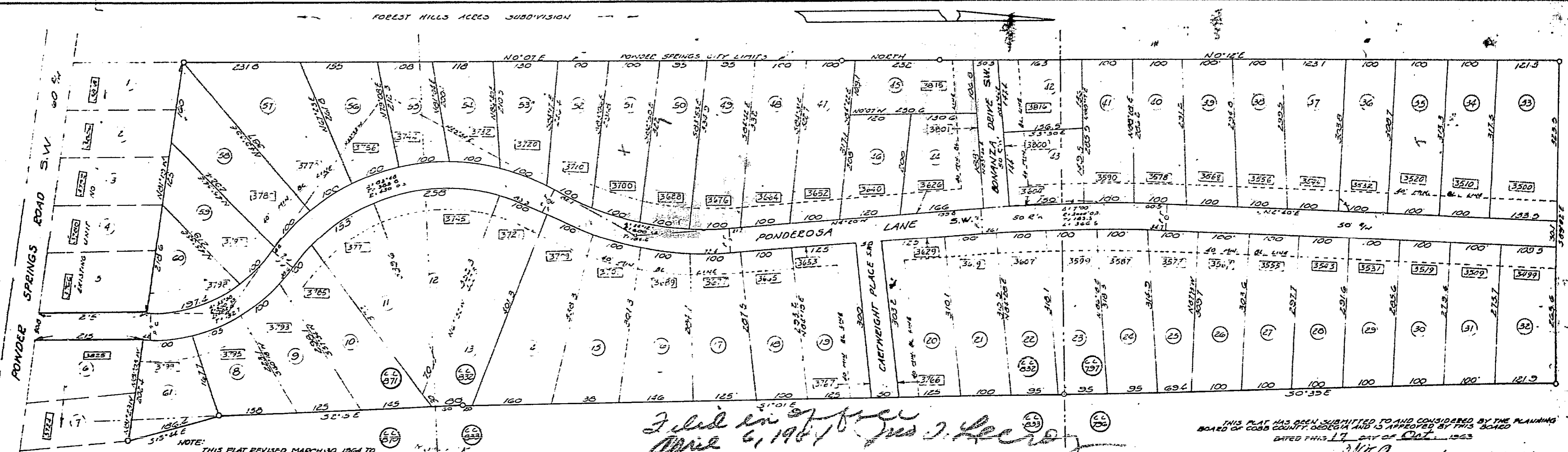
*Robert J. Weaver* Chairman  
*R. J. Adolfs* Secretary

This plat has been submitted to and considered by the planning board of Cobb County Georgia and is approved by said planning board.

Dated this 23 day of July, 1960  
By *Robert J. Weaver* Chairman  
By *R. J. Adolfs* Secretary

This plat has been submitted to and considered by the Commissioner of Roads and Revenues of Cobb County Georgia and is approved, subject to the protective covenants shown hereon.

Dated this 22 day of July, 1960  
By *Robert J. Weaver*  
Commissioner of Roads and Revenues Cobb Co. Ga.



NOTE: THIS PLAT REVISED MARCH 30, 1964 TO CORRECT DEPARTING ERROR. WEST DIMENSION OF LOT 34 CHANGED FROM 100' TO 110.0' ALL OTHER DIMENSIONS REMAIN THE SAME.  
*Robert J. Weaver*

IT IS HEREBY CERTIFIED THAT THIS PLAT IS TRUE AND CORRECT AND WAS PREPARED FROM AN ACTUAL SURVEY MADE UNDER MY SUPERVISION IN THE FIELD.  
*Robert J. Weaver*  
REG. CO. LAND SURVEYOR NO. 865

THE OWNER OF THE LAND SHOWN ON THIS PLAT AND WHOSE NAME IS SUBSCRIBED HEREON HEREBY ACKNOWLEDGES THAT THIS PLAT WAS PREPARED FROM AN ACTUAL SURVEY AND IS DEDICATED TO THE USE OF THE PUBLIC FOR STREETS, ALLEYS, PARKS, WATER COURSES, DRAINS, EASEMENTS AND PUBLIC PLACES THEREIN SHOWN FOR THE PURPOSES AND CONSIDERATIONS HEREIN EXPRESSED.

*Filed in office  
April 6, 1961  
Jno. J. Secoy*

REVISED PLAT  
PONDEROSA SUBDIVISION  
UNIT NO. 2

LOCATED IN LAND LOTS 707, 692, 670 & 671 19<sup>TH</sup> DIST. 2<sup>ND</sup> SECT. COBB COUNTY, GEORGIA

SURVEYED SEPT. 1963 BY  
ROBERT J. WEAVER SURVEYOR  
MARIETTA, GEORGIA  
SCALE: 1"=100'

THIS PLAT HAS BEEN SUBMITTED TO AND CONSIDERED BY THE PLANNING BOARD OF COBB COUNTY GEORGIA AND IS APPROVED BY THIS BOARD DATED THIS 17 DAY OF OCT. 1963

*Robert J. Weaver* CHAIRMAN  
*Robert J. Adolfs* SECRETARY

THIS PLAT HAS BEEN SUBMITTED TO AND CONSIDERED BY THE COMMISSIONER OF ROADS AND REVENUES OF COBB COUNTY GEORGIA AND IS APPROVED SUBJECT TO THE PROTECTIVE COVENANTS HEREON

DATED THIS 21 DAY OF SEP. 1963

