

PART TWO
SPRING LAKE SHORES
 IN LAND LOT 40 & 41
 22nd DISTRICT, 2nd SECTION,
 BARTOW COUNTY, GEORGIA

TOTAL AREA OF THIS SECTION = 39.717 ACRES
 42 LOTS

OWNER/DEVELOPER
SPRING LAKE SHORES, LLC
 101 BREE LANE
 CANTON, GEORGIA 30114
 (404) 502-4162

NOTE: THIS PROPERTY IS ZONED "R1"
 AND THE SETBACKS ARE AS FOLLOWS:
 FRONT, 25 FEET.
 SIDE, 10 FEET.
 REAR, 25 FEET.

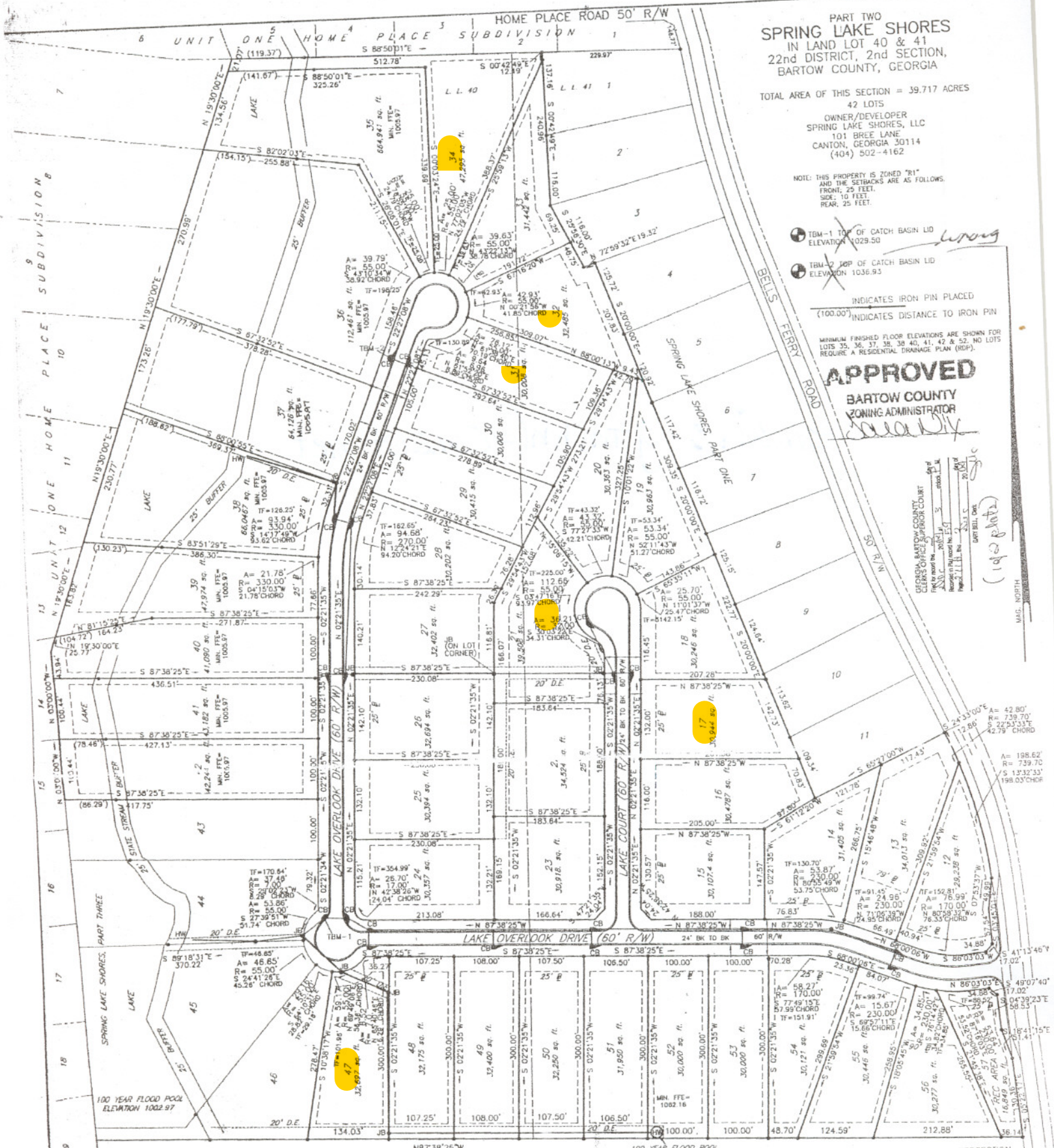
- TBM-1 TOP OF CATCH BASIN LID
 ELEVATION 1029.50
- TBM-2 TOP OF CATCH BASIN LID
 ELEVATION 1036.95

INDICATES IRON PIN PLACED
 (100.00') INDICATES DISTANCE TO IRON PIN

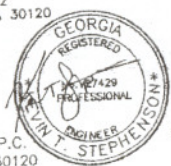
MINIMUM FINISHED FLOOR ELEVATIONS ARE SHOWN FOR
 LOTS 35, 36, 37, 38, 39, 40, 41, 42 & 52. NO LOTS
 REQUIRE A RESIDENTIAL DRAINAGE PLAN (RDP).

APPROVED
BARTOW COUNTY
 ZONING ADMINISTRATOR

DEPUTY BARTOW COUNTY ZONING COURT
 FILE NO. 2011-0011
 RECORDS & PERMITS DIVISION
 11/23/11
 (192 photo)



THE ENGINEERS STAMP IS PLACED ON THIS PLAT
 IN REFERENCE TO THE DETENTION BASINS AND
 FLOOD ELEVATIONS ONLY. STEPHENSON ENGINEERING, INC.
 PHONE (770)382-7877, FAX (770)382-3742
 317 GRASSDALE RD. CARTERSVILLE, GEORGIA 30120
 E-MAIL STEPHENSONENG@YAHOO.COM



FIELD TRAVERSE:
 CLOSURE; ONE FOOT IN 45,000 FEET
 USING A LIETZ SET 3.
 ANGULAR ERROR; 0"00'01" PER ANGLE
 POINT USING A LIETZ SET 3.
 ADJUSTED; USING THE COMPASS RULE.
SMITH & SMITH LAND SURVEYORS, P.C.
 2 SOUTH AVENUE, CARTERSVILLE, GA. 30120

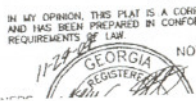
CHEROKEE COUNTRY SUBDIVISION

PARTS TWO & THREE
 STREET LENGTH SUMMARY

STREET NAME	R/W LENGTH	PAVEMENT LENGTH
LAKE OVERLOOK DRIVE	2285'	2280'
LAKE COURT	580'	580'

NOTE: RESIDENTIAL FENCES ARE NOT ALLOWED
 IN DRAINAGE EASEMENTS (D.E.).

NOTE: ALL LOT CORNERS AND INTERSECTION
 POINTS ARE MARKED WITH IRON PINS,
 EXCEPT WHERE NOTED OTHERWISE.
 FLOOD INSURANCE RATE MAP 13015C0085 F
 DATED SEPT.29,1989 SHOWS THIS PROPERTY
 IS NOT IN THE 100 YEAR FLOOD ZONE.



IN MY OPINION, THIS PLAT IS A CORRECT REPRESENTATION OF LAND PLATTED
 AND HAS BEEN PREPARED IN CONFORMITY WITH THE MINIMUM STANDARDS AND
 REQUIREMENTS OF LAW.
 NOTE: IRON PINS ARE (1/2" RE-BAR)
 EXCEPT AS SHOWN.
NOVEMBER 3, 2004
 REVISED 11-24-04