

N/T MYLES & GOULD
DB 319 PG 846
HARRISON ENGINEERING
FOR: RAYMOND BURRELL
DATED: MAY 23, 1972

- GENERAL NOTES**
1. TOTAL ACREAGE 45.643 ACRES
 2. NO. OF LOTS 94
 3. ZONING R-14
 4. MIN. LOT SIZE 14,500 S.F.
 5. MIN. LOT WIDTH 80'
 6. FRONT SETBACK 35' COLLECTOR
 7. SIDE YARD 20' LOCAL
 8. REAR YARD 15'
 9. MAX. HEIGHT 35'
 10. PROJECT TO BE SERVED BY PUBLIC SANITARY SEWER SYSTEM
 11. 20' EASEMENTS TO CONFORM TO ALL SANITARY SEWERS & STORM SEWERS.

L.L. 182
L.L. 171

OWNER:
C J D ENTERPRISES, INC.
CHRIS BEAUCHAMP
4780 IVY LANE
DOUGLASVILLE, GA. 30135
770-949-3810
PAGER 404-690-6115

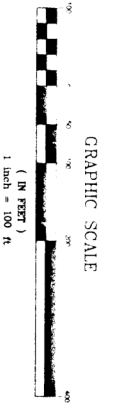
FINAL PLAT
IVEY LAKE
UNIT ONE

L.L. 171, 172 & 182 6th DISTRICT
CARROLL COUNTY, GEORGIA
DATE: MAY 10, 2000 SCALE: 1" = 100'

THIS PLAT RECORDED IN PLAT BOOK 71 PAGE 170 (CARROLL COUNTY)

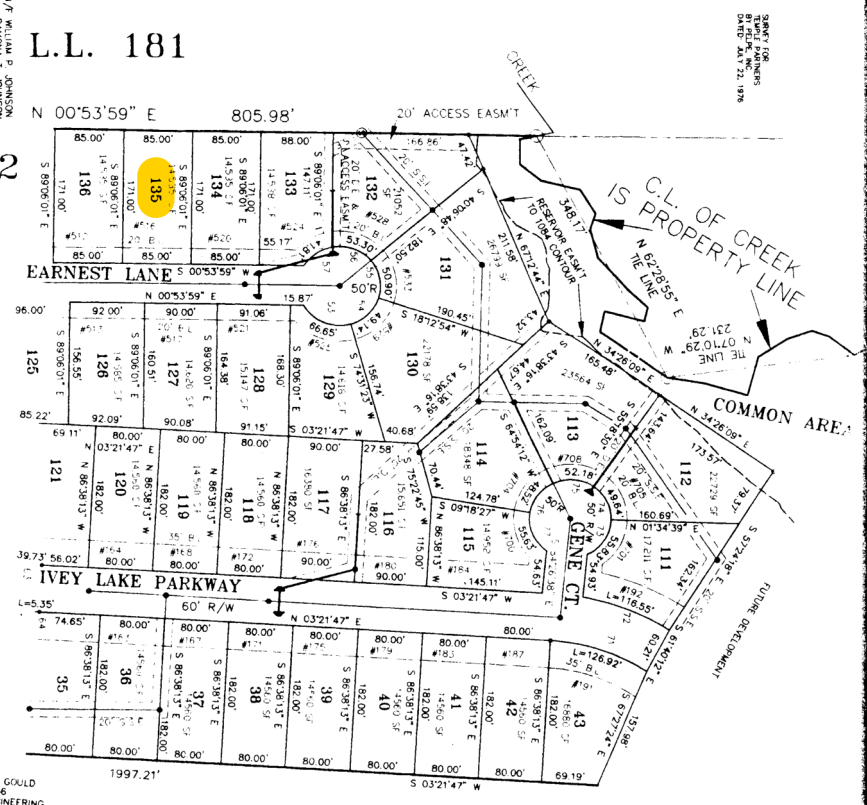


PREPARED BY
Turner Engineering & Land Surveying
8641 Dorris Road, Suite 220 Building B
Coulterville, Georgia 30134 (770) 949-0060



SHEET 1 OF 2

SMALL LOTS
 81 FEET WIDE
 DATED MAY 23, 1972

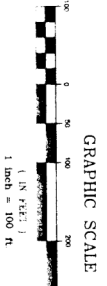


N/T MYLES J. GOULD
 DB 319 PG 846
 HARRISON ENGINEERING
 FOR RAYMOND BURRELL
 DATED MAY 23, 1972

LOT	AREA	PERCENT	BEARING	DISTANCE
111	1,450.00	1.45	N 00°53'59" E	805.98'
112	1,450.00	1.45	N 00°53'59" E	805.98'
113	1,450.00	1.45	N 00°53'59" E	805.98'
114	1,450.00	1.45	N 00°53'59" E	805.98'
115	1,450.00	1.45	N 00°53'59" E	805.98'
116	1,450.00	1.45	N 00°53'59" E	805.98'
117	1,450.00	1.45	N 00°53'59" E	805.98'
118	1,450.00	1.45	N 00°53'59" E	805.98'
119	1,450.00	1.45	N 00°53'59" E	805.98'
120	1,450.00	1.45	N 00°53'59" E	805.98'
121	1,450.00	1.45	N 00°53'59" E	805.98'
122	1,450.00	1.45	N 00°53'59" E	805.98'
123	1,450.00	1.45	N 00°53'59" E	805.98'
124	1,450.00	1.45	N 00°53'59" E	805.98'
125	1,450.00	1.45	N 00°53'59" E	805.98'
126	1,450.00	1.45	N 00°53'59" E	805.98'
127	1,450.00	1.45	N 00°53'59" E	805.98'
128	1,450.00	1.45	N 00°53'59" E	805.98'
129	1,450.00	1.45	N 00°53'59" E	805.98'
130	1,450.00	1.45	N 00°53'59" E	805.98'
131	1,450.00	1.45	N 00°53'59" E	805.98'
132	1,450.00	1.45	N 00°53'59" E	805.98'
133	1,450.00	1.45	N 00°53'59" E	805.98'
134	1,450.00	1.45	N 00°53'59" E	805.98'
135	1,450.00	1.45	N 00°53'59" E	805.98'
136	1,450.00	1.45	N 00°53'59" E	805.98'

L.L. 181
 L.L. 182

PREPARED BY
Turner Engineering & Land Surveying
 8641 Dorris Road Suite 220 Building B
 Courtyard Common
 Douglasville, Georgia 30134 (770) 949-0060



FINAL PLAT
 OF
IVEY LAKE
 UNIT ONE
 L.L. 171, 172 & 182 6th DISTRICT
 CARROLL COUNTY, GEORGIA
 DATE: MAY 10, 2000 SCALE: 1" = 100'



- GENERAL NOTES**
- THE FIELD DATA UPON WHICH THE BOUNDARY OF THIS PLAT IS BASED HAS A CLOSE PROXIMITY OF ONE FOOT IN 10,000+ FT.
 - ALL DISTANCES ARE IN FEET AND DECIMALS THEREOF.
 - ALL LOT CORNERS ARE MARKED BY 1/2" REBAR'S EXCEPT AS NOTED OTHERWISE.
 - ALL LOT CORNERS ARE MARKED BY 1/2" REBAR'S EXCEPT AS NOTED OTHERWISE.
 - TOTAL ACRES SUBMITTED 43.843 ACRES.
 - MINIMUM SETBACKS FRONT - 35' CORNER 20' REAR 20'
 - MINIMUM SETBACKS SIDE - 15'
 - ZONED, R14
 - LOT TOTAL - 94 LOTS
 - ALL SPACING EXPANSION TO CORRESPOND TO ACTUAL LOCATION OF SANITARY SEWER ELEMENTS TO CORRESPOND TO ACTUAL LOCATION OF SANITARY SEWER LINES.

IT IS HEREBY CERTIFIED THAT THIS PLAT IS TRUE AND CORRECT AND WAS PREPARED FROM AN ACTUAL SURVEY OF THE PROPERTY MADE BY ME OR UNDER MY SUPERVISION AND MARKED AS THEREIN. THE LOCATION, SIZE, TYPE AND MATERIAL ARE CORRECTLY SHOWN, AND THAT THE PLAT COMPLES WITH ALL REQUIREMENTS OF THE TITLE SUBDIVISION REGULATIONS.

REGISTERED GEORGIA LAND SURVEYOR'S NO. **2078**
 DATE: **5-10-2000**

THE OWNER OF THE LAND SHOWN ON THIS PLAT AND WHOSE NAME IS SHOWN HEREIN, HEREBY ACKNOWLEDGES THAT THIS PLAT WAS MADE FROM AN ACTUAL SURVEY AND DEDICATES TO THE USE OF THE PUBLIC FOREVER ALL STREETS, PARKS, GRASS, EASEMENTS AND PUBLIC UTILITIES SHOWN HEREON, WITHIN THE BOUNDARIES OF THE SUBDIVISION.

DATE: **5-12-00**

OWNER: **CID Enterprises, Inc.** DATE: **5-12-00**

THIS SUBDIVISION HAS BEEN APPROVED FOR RECORDING BY THE CITY COUNCIL OF TEMPLE, GEORGIA, AND HAS FIRST BEEN TECHNICALLY EXAMINED BY THE COUNTY PLANNING DEPARTMENT OF TEMPLE, GEORGIA, AND APPROVED IN ACCORDANCE WITH EXISTING RULES AND REGULATIONS.

DATE: **5-12-00**

DATE: **5-12-00**