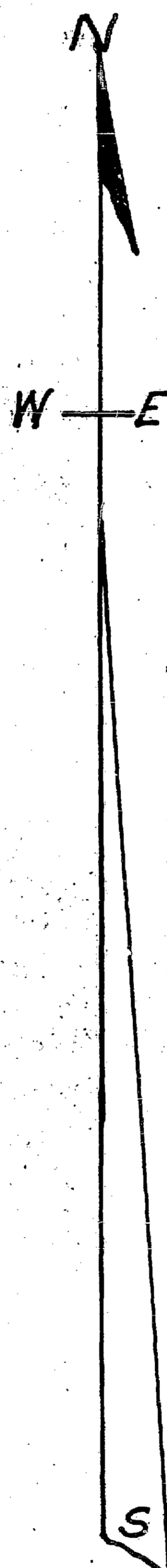
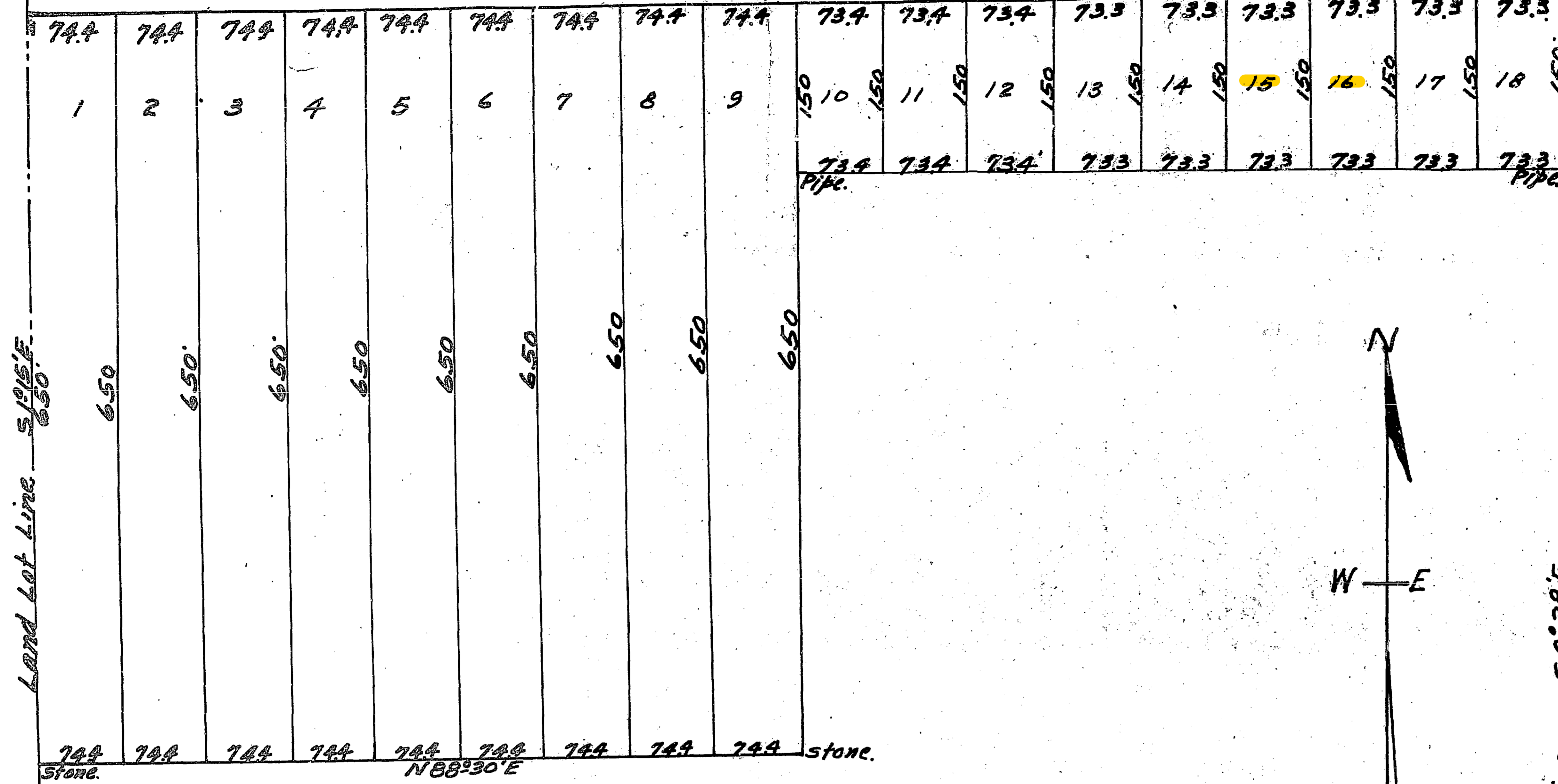


Land Lot Line.  $S 88^{\circ} 30' W$

Road

Pipe



Subdivision of  
R.L. Hubbard's  
ESTATE

In Land Lots 300-301-385-18<sup>TH</sup> Dist. 2<sup>ND</sup> Sec. Cobb. Co. Ga.  
Scale 1" = 100ft.

Apr. 1939

Gordon Valley Engrs.

Land Lot Line  $S 0^{\circ} 28' E$

L.L. 301  
L.L. 384  
L.L. 300  
L.L. 365

$420$   
 $S 63^{\circ} 45' E$

315

900

95

670

270

180

180

160

145

135

123

112

150